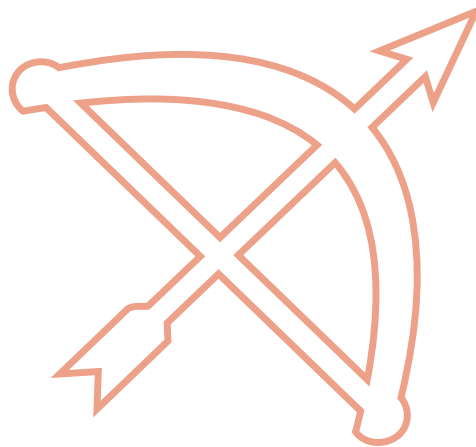


# MEDIA TRADE

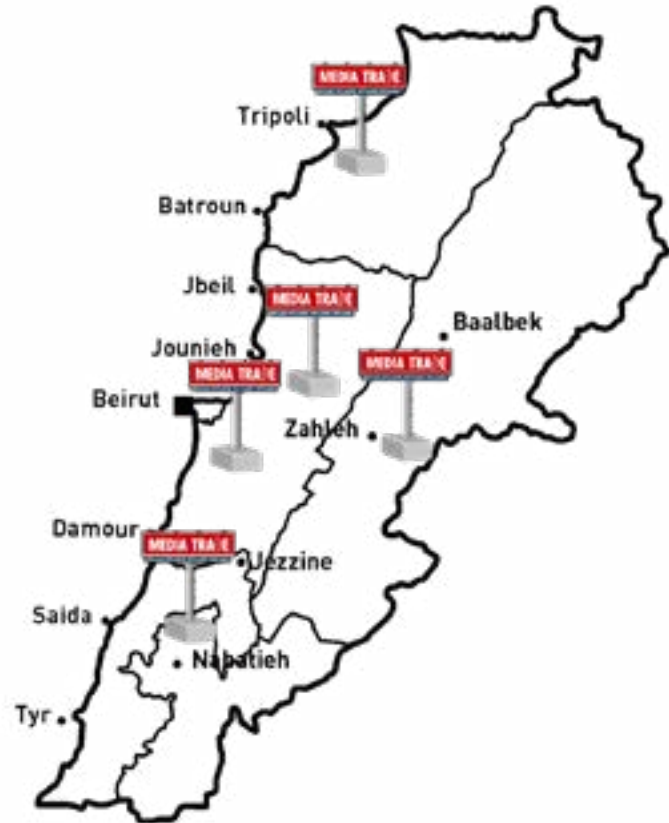


Al Arid Street, Dekwaneh Slave, Metn - Lebanon | **E:** [info@mediatrade.me](mailto:info@mediatrade.me)  
**T/F** 00 961 1 695 383 - 00 961 1 695 680 - 00 961 1 695 681 | **M** 00 961 3 019 520

**Media Trade is the leading OOH  
company operating in Lebanon  
with more than 400 prime locations  
and digital printing services.**

**GM:**

**Nassif Elias Khoury Ghanem**





**We strive to provide the best indoor and outdoor printing service quality through our Jet I printing machines (width 3.20m and 5.20m) that are equipped with advanced programs and systems as we use a high quality of flex and ink that guarantees a longlasting duration for the printed banner.**



**Beirut  
Northern Metn  
kesserwan**





**MEDIA TRADE**

**800 A**

**LOCATION:** SIN L FIL (MILITARY POLICE)  
**DIRECTION:** HABTOUR HOTEL  
**SIZE:** 10.00 X 4.30



**MEDIA TRADE**

**800 B**

**LOCATION:** SIN L FIL (MILITARY POLICE)  
**DIRECTION:** CHEVROLET  
**SIZE:** 10.00 X 4.30





**MEDIA TRADE**

**801 A**

**LOCATION:** ALFA ( HAZMIEH - DORA HIGHWAY )  
**DIRECTION:** DORA  
**SIZE:** 14.70 X 4.30



**MEDIA TRADE**

**801 B**

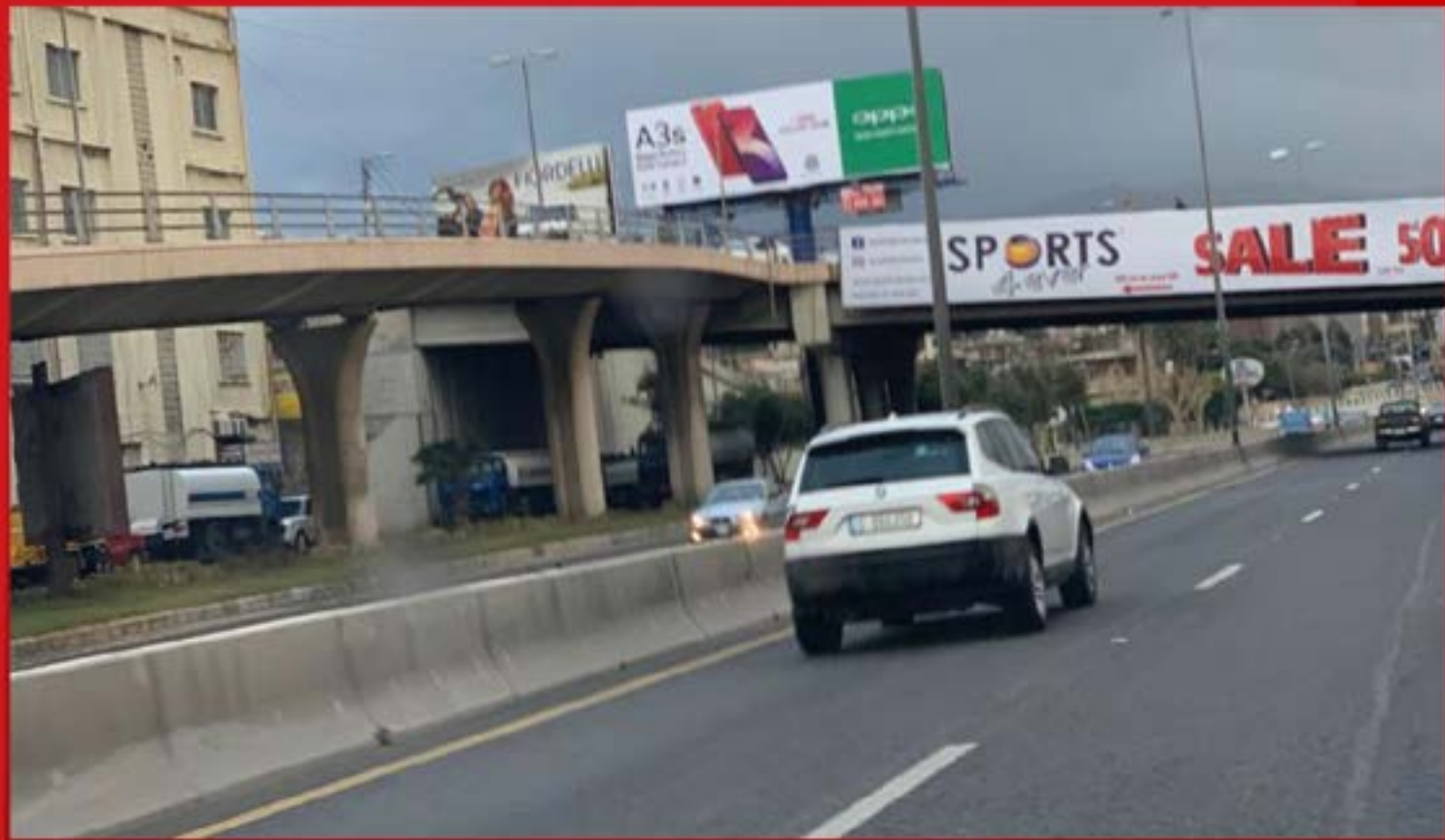
**LOCATION:** ALFA ( HABTOUR - CHEVROLET )  
**DIRECTION:** CHEVROLET  
**SIZE:** 14.70 X 4.30



**MEDIA TRADE**

**802 A**

**LOCATION:** DBAYEH , LE ROYAL BRIDGE  
**DIRECTION:** JOUNIEH  
**SIZE:** 14.70 X 4.30



**MEDIA TRADE**

**802 B**

**LOCATION:** DBAYEH , LE ROYAL BRIDGE  
**DIRECTION:** BEIRUT  
**SIZE:** 14.70 X 4.30





**MEDIA TRADE**

**803 A**

**LOCATION:** JOUNIEH HIGHWAY  
**DIRECTION:** JOUNIEH  
**SIZE:** 14.70 X 4.30





**MEDIA TRADE**

**803 B**

**LOCATION:** JOUNIEH HIGHWAY  
**DIRECTION:** BEIRUT  
**SIZE:** 14.70 X 4.30



**MEDIA TRADE**

**804 A**

**LOCATION:** ACHKOUT HIGHWAY  
**DIRECTION:** BEIRUT  
**SIZE:** 8.00 X 4.00



**MEDIA TRADE**

**804 B**

**LOCATION:** ACHKOUT HIGHWAY  
**DIRECTION:** FARAYA  
**SIZE:** 8.00 X 4.00



**MEDIA TRADE**

**805 A**

**LOCATION:** DEKWANE YAMMINE BAKERY  
**DIRECTION:** JOUNIEH  
**SIZE:** 8.00 X 10.00





**MEDIA TRADE**

**805 B**

**LOCATION:** DEKWANE YAMMINE BAKERY  
**DIRECTION:** SALOUME  
**SIZE:** 8.00 X 10.00



**MEDIA TRADE**

**806 A**

**LOCATION:** JOUNIEH HIGHWAY  
**DIRECTION:** JOUNIEH  
**SIZE:** 6.60 X 320



**MEDIA TRADE**

**806 B**

**LOCATION:** JOUNIEH HIGHWAY  
**DIRECTION:** BEIRUT  
**SIZE:** 6.60 X 320



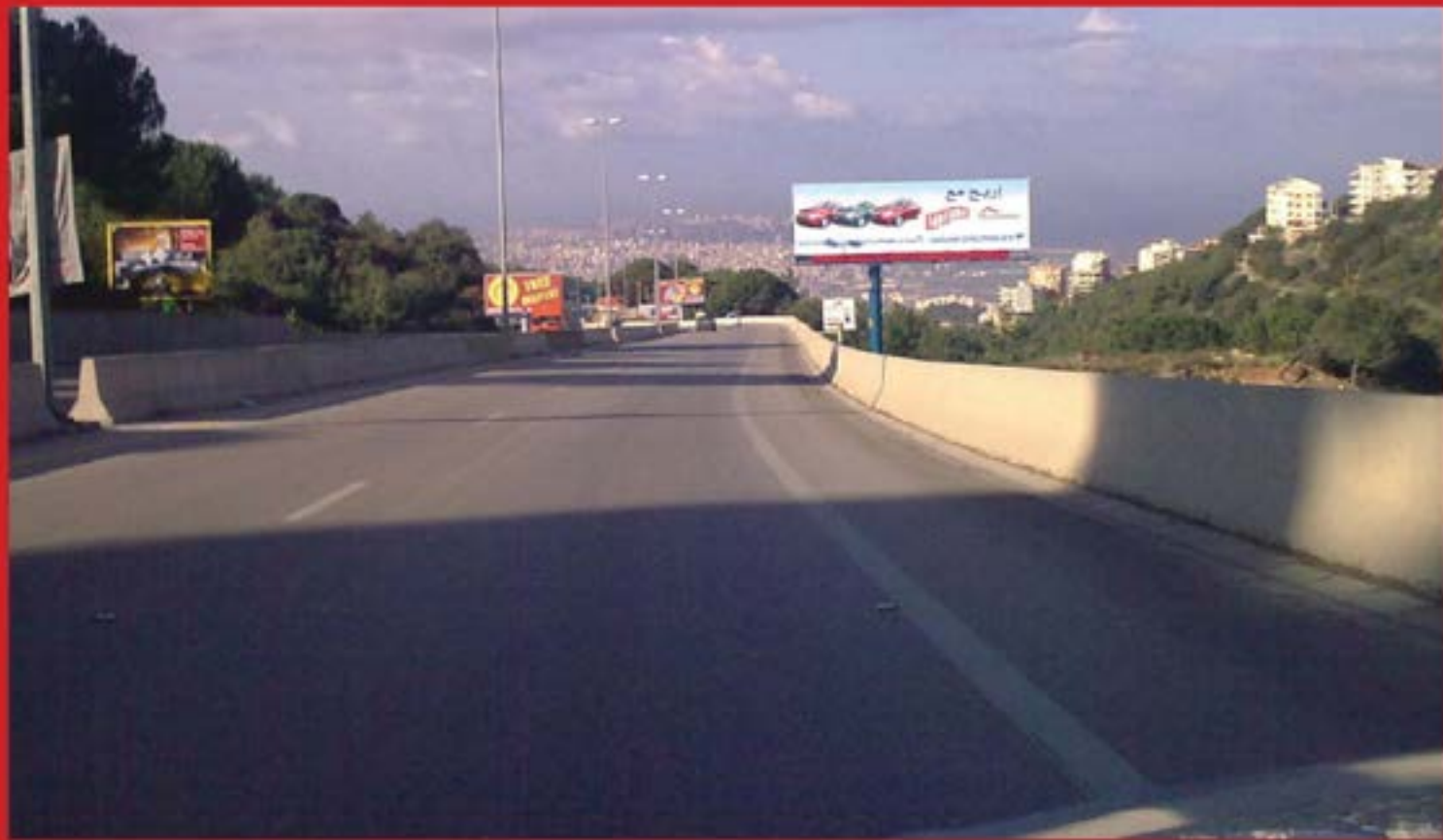


**MEDIA TRADE**

**807 B**

**LOCATION:** ACHRAFIEH ENTRANCE  
**DIRECTION:** SAGESSE SCHOOL  
**SIZE:** 8.00 X 3.00 (BACKLIT)





**MEDIA TRADE**

**808 A**

**LOCATION:** METN HIGHWAY  
**DIRECTION:** BEIRUT  
**SIZE:** 14.70 X 4.30



**MEDIA TRADE**

**808 B**

**LOCATION: METN HIGHWAY**  
**DIRECTION: BROUMANA**  
**SIZE: 14.70 X 4.30**



**MEDIA TRADE**

**809 C**

**LOCATION:** METN HIGHWAY  
**DIRECTION:** BEIRUT  
**SIZE:** 14.70 X 4.30



Towards Beirut



Towards Broumana



**MEDIA TRADE**

**810 C**

**LOCATION:** METN HIGHWAY  
**DIRECTION:** BROUMANA & BEIRUT  
**SIZE:** 14.70 X 4.30



**PANDA PLAST**  
 SINCE 1978

الخبرة عمراً

التجارة الإلكترونية

Beirut, Boudarhane, T. 9 21 62888  
 Nabatieh, M. 24 22 64427  
 P.O. Box 1000, Beirut, Lebanon

**MEDIA TRADE**  
 71 / 696 363  
 01 / 696 363

50% **Special Price**

18m	25m	30m
100	150	200



**MEDIA TRADE**

**811 A**

**LOCATION:** METN HIGHWAY  
**DIRECTION:** BEIRUT  
**SIZE:** 8.00 X 4.00



**MEDIA TRADE**

**811 B**

**LOCATION: METN HIGHWAY**  
**DIRECTION: BROUMANA**  
**SIZE: 8.00 X 4.00**



**MEDIA TRADE**

**812 A**

**LOCATION:** SALOUMY HIGHWAY  
**DIRECTION:** JOUNIEH  
**SIZE:** 14.70 X 4.30





**MEDIA TRADE**

**812 B**

**LOCATION:** SALOUMY HIGHWAY  
**DIRECTION:** MKALLESS  
**SIZE:** 14.70 X 4.30





**MEDIA TRADE**

**813 A**

**LOCATION:** METN HIGHWAY  
**DIRECTION:** BEIRUT  
**SIZE:** 14.70 X 4.30



**MEDIA TRADE**

**813 B**

**LOCATION:** METN HIGHWAY  
**DIRECTION:** BAABDAT  
**SIZE:** 14.70 X 4.30



**MEDIA TRADE**

**814 A**

**LOCATION:** METN HIGHWAY  
**DIRECTION:** BAABDAT  
**SIZE:** 8.00 X 4.00



**MEDIA TRADE**

**814 B**

**LOCATION:** METN HIGHWAY  
**DIRECTION:** BEIRUT  
**SIZE:** 8.00 X 4.00





**MEDIA TRADE**

**815 B**

**LOCATION:** HARET HREIK NEW AIRPORT BRIDGE  
**DIRECTION:** AIRPORT  
**SIZE:** 9.50 X 20V.00



**MEDIA TRADE**

**816 A**

**LOCATION:** FURN EL CHEBBAK FACING ABRAJ  
**DIRECTION:** HAZMIEH  
**SIZE:** 12.25 X 4.30



**MEDIA TRADE**

**816 B**

**LOCATION:** FURN EL CHEBBAK FACING ABRAJ  
**DIRECTION:** FURN EL CHEBBAK  
**SIZE:** 12.25 X 4.30





**MEDIA TRADE**

**817 B**

**LOCATION:** ZOUK MOSBEH  
**DIRECTION:** NDU  
**SIZE:** 8.00 X 4.00





**MEDIA TRADE**

**818 A**

**LOCATION:** MANSOURIEH NEAR CORAL STATION  
**DIRECTION:** MKALLES  
**SIZE:** 14.70 X 4.30



**MEDIA TRADE**

**818 B**

**LOCATION:** MANSOURIEH NEAR CORAL STATION  
**DIRECTION:** BEIT MERY  
**SIZE:** 14.70 X 4.30



**MEDIA TRADE**

**819 A**

**LOCATION:** DORA HIGHWAY (DORA ENTRANCE)  
**DIRECTION:** JOUNIEH  
**SIZE:** 14.70 X 4.30



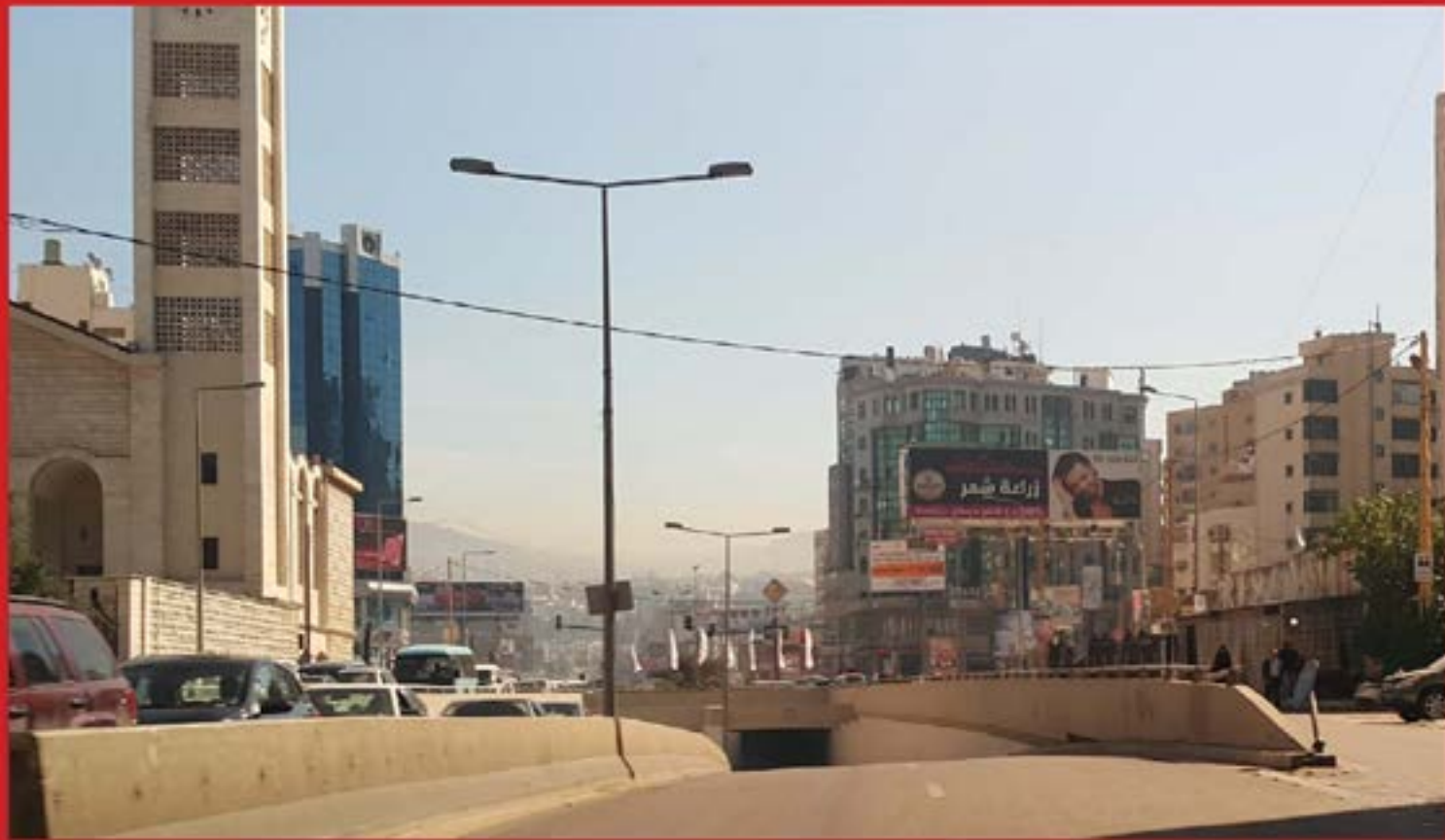


**MEDIA TRADE**

**819 B**

**LOCATION:** DORA HIGHWAY (DORA EXIT)  
**DIRECTION:** BEIRUT  
**SIZE:** 14.70 X 4.30





**MEDIA TRADE**

**820 A**

**LOCATION:** CHIAH MAR MKHAEIL  
**DIRECTION:** HAZMIEH  
**SIZE:** 14.70 X 4.30



**MEDIA TRADE**

**820 B**

**LOCATION:** CHIAH MAR MKHAEIL  
**DIRECTION:** MECHARRAFIEH  
**SIZE:** 14.70 X 4.30



**MEDIA TRADE**

**821 A**

**LOCATION:** HAZMIEH - SAYAD NEAR ROTANA  
**DIRECTION:** HAZMIEH  
**SIZE:** 14.70 X 4.30





**MEDIA TRADE**

**821 B**

**LOCATION:** HAZMIEH - SAYAD NEAR ROTANA  
**DIRECTION:** CHIAH  
**SIZE:** 14.70 X 4.30





**MEDIA TRADE**

**822 A**

**LOCATION:** HAZMIEH - SAYAD (SEA SWEET)  
**DIRECTION:** CHIAH  
**SIZE:** 14.70 X 4.30



**MEDIA TRADE**

**822 B**

**LOCATION:** HAZMIEH - SAYAD (SEA SWEET)  
**DIRECTION:** HAZMIEH  
**SIZE:** 14.70 X 4.30



**MEDIA TRADE**

**823 A**

**LOCATION: GALERIE SEMAAN (GALAXY)**  
**DIRECTION: GALAXY**  
**SIZE: 6.00 X 8.00**





**MEDIA TRADE**

**823 B**

**LOCATION:** GALERIE SEMAAN (GALAXY)  
**DIRECTION:** CHEVROLET  
**SIZE:** 6.00 X 8.00





**MEDIA TRADE**

**824 A**

**LOCATION: JEITA**  
**DIRECTION: FARAYA**  
**SIZE: 14.70 X 4.30**



**MEDIA TRADE**

**824 B**

**LOCATION: JEITA**  
**DIRECTION: ZOOK**  
**SIZE: 14.70 X 4.30**



**MEDIA TRADE**

**825 B**

**LOCATION:** SIN EL FIL  
**DIRECTION:** JISR EL WATI  
**SIZE:** 17.00 X 21.00





**MEDIA TRADE**

**826 A**

**LOCATION:** DAHIEH SAYED HADI HIGHWAYS  
**DIRECTION:** DAHIEH  
**SIZE:** 9.00 X 25.00





**MEDIA TRADE**

**827 A**

**LOCATION: MANSOURIYE**  
**DIRECTION: MKALLES**  
**SIZE: 5.00 X 11.00**



**MEDIA TRADE**

**828 A**

**LOCATION:** JEITA  
**DIRECTION:** BEIRUT  
**SIZE:** 11.00 X 6.00



**MEDIA TRADE**

First Regional Outdoor Media in Lebanon ☎ /695 383



**MEDIA TRADE**

**829 A**

**LOCATION:** JISR EL BACHA BEFOR KEYROUZ  
**DIRECTION:** MKALLES  
**SIZE:** 14.70 X 4.30





**MEDIA TRADE**

895 103



**MEDIA TRADE**

**829 B**

**LOCATION:** JISR EL BACHA BEFOR KEYROUZ  
**DIRECTION:** HAZMIEH  
**SIZE:** 14.70 X 4.30



**MEDIA TRADE**

**830 A**

**LOCATION:** CHIAH NEAR KFC  
**DIRECTION:** HAZMIEH  
**SIZE:** 10.00 X 4.00



**MEDIA TRADE**

**830 B**

**LOCATION:** CHIAH NEAR KFC  
**DIRECTION:** MAR MKHAEIL  
**SIZE:** 8.00 X 4.00





**MEDIA TRADE**

**831 A**

**LOCATION:** MANSOURIEH BEIT MERI  
**DIRECTION:** BEIT MERI  
**SIZE:** 14.70 X 4.30



**MEDIA TRADE**

**831 B**

**LOCATION:** MANSOURIEH BEIT MERI  
**DIRECTION:** MKALLES  
**SIZE:** 14.70 X 4.30



**MEDIA TRADE**

**832 C**

**LOCATION:** MANSOURIEH  
**DIRECTION:** BEIT MERI  
**SIZE:** 8.00 X 4.00





**MEDIA TRADE**

**832 B**

**LOCATION: ZOOK MOSBEH**  
**DIRECTION: BEIRUT**  
**SIZE: 6.00 X 19.00**



**MEDIA TRADE**

**834 C**

**LOCATION:** METN HIGHWAY  
**DIRECTION:** BROUMANA & BEIRUT  
**SIZE:** 8.00 X 4.00



**MEDIA TRADE**

**840 A**

**LOCATION:** HAZMIEH BEFORE SPINNEYS

**DIRECTION:** BEIRUT

**SIZE:** 14.70 X 4.30

**PRICE:** 3000 \$





**MEDIA TRADE**

**840 B**

**LOCATION:** HAZMIEH - AFTER SPINNEYS  
**DIRECTION:** HAZMIEH  
**SIZE:** 14.70 X 4.30



**MEDIA TRADE**

**841 A**

**LOCATION:** DORA HIGHWAY  
**DIRECTION:** JOUNIEH  
**SIZE:** 14.70 X 8.00



**MEDIA TRADE**

**842 A**

**LOCATION:** ROUND ABOUT ACHKOUT -RAYFOUN  
**DIRECTION:** FARAYA  
**SIZE:** 14.70 X 4.30





**MEDIA TRADE**



**MEDIA TRADE**

**842 B**

**LOCATION:** ROUND ABOUT ACHKUUT - RAYFOUN  
**DIRECTION:** BEIRUT  
**SIZE:** 14.70 X 4.30



**MEDIA TRADE**

**844 A**

**LOCATION:** ROUMIEH - METN HIGHWAY  
**DIRECTION:** BAABDAT  
**SIZE:** 14.70 X 4.30



**MEDIA TRADE**

**844 B**

**LOCATION:** ROUMIEH - METN HIGHWAY  
**DIRECTION:** BEIRUT  
**SIZE:** 14.70 X 4.30





**MEDIA TRADE**

**845 A**

**LOCATION:** ZOOK MOSBEH NEAR NDU  
**DIRECTION:** JEITA  
**SIZE:** 1200 X 600



**MEDIA TRADE**

**845 B**

**LOCATION:** ZOOK MOSBEH NEAR NDU  
**DIRECTION:** JEITA  
**SIZE:** 800 X 600



**MEDIA TRADE**

**846 A**

**LOCATION:** ZOOK MOSBEH NEAR NDU  
**DIRECTION:** JEITA  
**SIZE:** 800 X 1000





**MEDIA TRADE**

**846 B**

**LOCATION:** ZOOK MOSBEH NEAR NDU  
**DIRECTION:** JEITA  
**SIZE:** 600 X 1000



**MEDIA TRADE**

**847 A**

**LOCATION:** DORA HIGHWAY (FACING MERCEDES)  
**DIRECTION:** BEIRUT  
**SIZE:** 14.70 X 4.30



**MEDIA TRADE**

**847 B**

**LOCATION:** DORA HIGHWAY (FACING MERCEDES)  
**DIRECTION:** JOUNIEH  
**SIZE:** 14.70 X 4.30





**MEDIA TRADE**

**848 A**

**LOCATION:** BOURJ HAMMOUD (ENTRANCE)  
**DIRECTION:** MAR MKHAEL  
**SIZE:** 14.70 X 4.30



**MEDIA TRADE**

**848 B**

**LOCATION:** BOURJ HAMMOUD (ENTRANCE)  
**DIRECTION:** DORA  
**SIZE:** 14.70 X 4.30



**MEDIA TRADE**

**849 C**

**LOCATION:** NAHR EL KALB  
**DIRECTION:** ZOOK & HOLIDAY BEACH  
**SIZE:** 8.00 X 4.00





**MEDIA TRADE**

**850 A**

**LOCATION:** BEIT EL CHAAR - MTAYLEB  
**DIRECTION:** ANTELIAS  
**SIZE:** 12.20 X 6.30



**MEDIA TRADE**

**850 A**

**LOCATION:** BEIT EL CHAAR - MTAYLEB  
**DIRECTION:** ANTELIAS  
**SIZE:** 12.20 X 6.30



**MEDIA TRADE**

**851 B**

**LOCATION:** ZOOK MOSBEH  
**DIRECTION:** FARAYA  
**SIZE:** 11.00 X 6.00





**MEDIA TRADE**

**852 B**

**LOCATION:** ZOOK MOSBEH  
**DIRECTION:** BEIRUT  
**SIZE:** 8.00 X 3.00



**MEDIA TRADE**

**853 A**

**LOCATION:** ZOOK MOSBEH  
**DIRECTION:** JOUNIEH  
**SIZE:** 11.00 X 6.00



**MEDIA TRADE**

**855 A**

**LOCATION:** ROUMIEH  
**DIRECTION:** ROUMIEH  
**SIZE:** 10.60 X 4.20



# MEDIA TRADE



**MEDIA TRADE**

**855 B**

**LOCATION:** ROUMIEH  
**DIRECTION:** BEIRUT  
**SIZE:** 23.60 X 3.00



**MEDIA TRADE**

**856 A**

**LOCATION:** HAZMIEH - BEIRUT RIVER HW  
**DIRECTION:** HAZMIEH  
**SIZE:** 14.70 X 4.30



**MEDIA TRADE**

**856 B**

**LOCATION:** HAZMIEH - BEIRUT RIVER HW  
**DIRECTION:** DORA  
**SIZE:** 14.70 X 4.30





**MEDIA TRADE**

**857 A**

**LOCATION:** ZOOK HIGHWAY  
**DIRECTION:** BEIRUT  
**SIZE:** 14.70 X 4.30



**MEDIA TRADE**

First Regional Outdoor Media in Lebanon ☎ /095 383



**MEDIA TRADE**

**857 B**

**LOCATION:** ZOOK HIGHWAY  
**DIRECTION:** JOUNIEH  
**SIZE:** 14.70 X 4.30

**YOKOHAMA**  
OWNED JUST BY THE  
JAM A YOKOHAMA

**MEDIA TRADE**

First Regional Outdoor Media In Lebanon ☎ /695 383

SHOP ONLINE BEST PRICE FAST DELIVERY



**MEDIA TRADE**

**858 A**

**LOCATION:** DBAYEH HIGHWAY - LE ROYAL  
**DIRECTION:** JOUNIEH  
**SIZE:** 20.00 X 6.30





**MEDIA TRADE**

**910 A&B**

**LOCATION:** ZOUK MOSBEH  
**DIRECTION:** BEIRUT AND JEITA  
**SIZE:** 8.50 X 14.00 , 8.50 X 14.00



**MEDIA TRADE**

**859 B**

**LOCATION:** BLISS ENTRANCE (HAMRA)  
**DIRECTION:** BEIRUT  
**SIZE:** 7.00 X 3.70



**MEDIA TRADE**

**860 B**

**LOCATION:** METN HIGHWAY  
**DIRECTION:** BEIRUT  
**SIZE:** 4.00 X 8.00





**MEDIA TRADE**

**861 B**

**LOCATION:** MKALLES - JISR EL BACHA  
**DIRECTION:** HAZMIEH  
**SIZE:** 9.00 X 21.00



**MEDIA TRADE**

**1200**

**LOCATION:** DEKWANEH- SIN EL FIL HIGHWAY  
**DIRECTION:** JDEIDEH  
**SIZE:** 30.00 X 2.60



**MEDIA TRADE**

**1205**

**LOCATION:** DEKWANEH - CHALOUHI HIGHWAY  
**DIRECTION:** JOUNIEH  
**SIZE:** 26.00 X 2.50





**MEDIA TRADE**

**1206**

**LOCATION:** JDEIDEH- CITY MALL  
**DIRECTION:** BEIRUT  
**SIZE:** 40.00 X 2.50



**MEDIA TRADE**

**1209**

**LOCATION:** FURN EL CHEBBAK - ALFA  
**DIRECTION:** FURN EL CHEBBAK  
**SIZE:** 3000 X 250



**MEDIA TRADE**

**1210**

**LOCATION:** FURN EL CHEBBAK - ALFA  
**DIRECTION:** SIN EL FIL - HABTOUR  
**SIZE:** 3000 X 250





**MEDIA TRADE**

**1101 C**

**LOCATION:** CHIAH FACING IKHLAS SWEETS  
**DIRECTION:** BEIRUT  
**SIZE:** 8.00 X 4.00



**MEDIA TRADE**

**1102 A**

**LOCATION:** CHIAH - GALLERY SEMAAN  
**DIRECTION:** CHEVROLET  
**SIZE:** 14.70 X 4.30



**MEDIA TRADE**

**1102 B**

**LOCATION:** CHIAH - GALLERY SEMAAN  
**DIRECTION:** MAR MKHAEIL  
**SIZE:** 14.70 X 4.30





**MEDIA TRADE**

**1104 A**

**LOCATION:** CHIAH  
**DIRECTION:** BEIRUT MALL  
**SIZE:** 14.70 X 4.30



**MEDIA TRADE**

**1104 B**

**LOCATION: CHIAH**  
**DIRECTION: MAR MKHAEIL**  
**SIZE: 14.70 X 4.30**



**MEDIA TRADE**

**1200**

**LOCATION:** DEKWANEH- SIN EL FIL HIGHWAY  
**DIRECTION:** JDEIDEH  
**SIZE:** 30.00 X 2.60





**MEDIA TRADE**

**1201**

**LOCATION:** JOUNIEH HIGHWAY  
**DIRECTION:** TRIPOLY  
**SIZE:** 32.00 X 2.00



**MEDIA TRADE**

**1202**

**LOCATION:** JOUNIEH HIGHWAY  
**DIRECTION:** BEIRUT  
**SIZE:** 32.00 X 2.00



**MEDIA TRADE**

**1204**

**LOCATION:** BATROUN HIGHWAY ( ENTRANCE )  
**DIRECTION:** TRIPOLY  
**SIZE:** 27.00 X 2.00





**MEDIA TRADE**

**1205**

**LOCATION:** DEKWANEH - CHALOUHI HIGHWAY  
**DIRECTION:** JOUNIEH  
**SIZE:** 26.00 X 2.50



**MEDIA TRADE**

**1206**

**LOCATION:** JDEIDEH- CITY MALL  
**DIRECTION:** BEIRUT  
**SIZE:** 40.00 X 2.50



**MEDIA TRADE**

**1207**

**LOCATION:** GHAZIR NEAR CASINO DU LIBAN  
**DIRECTION:** TRIPOLI  
**SIZE:** 25.00 X 1.75





**MEDIA TRADE**

**1208**

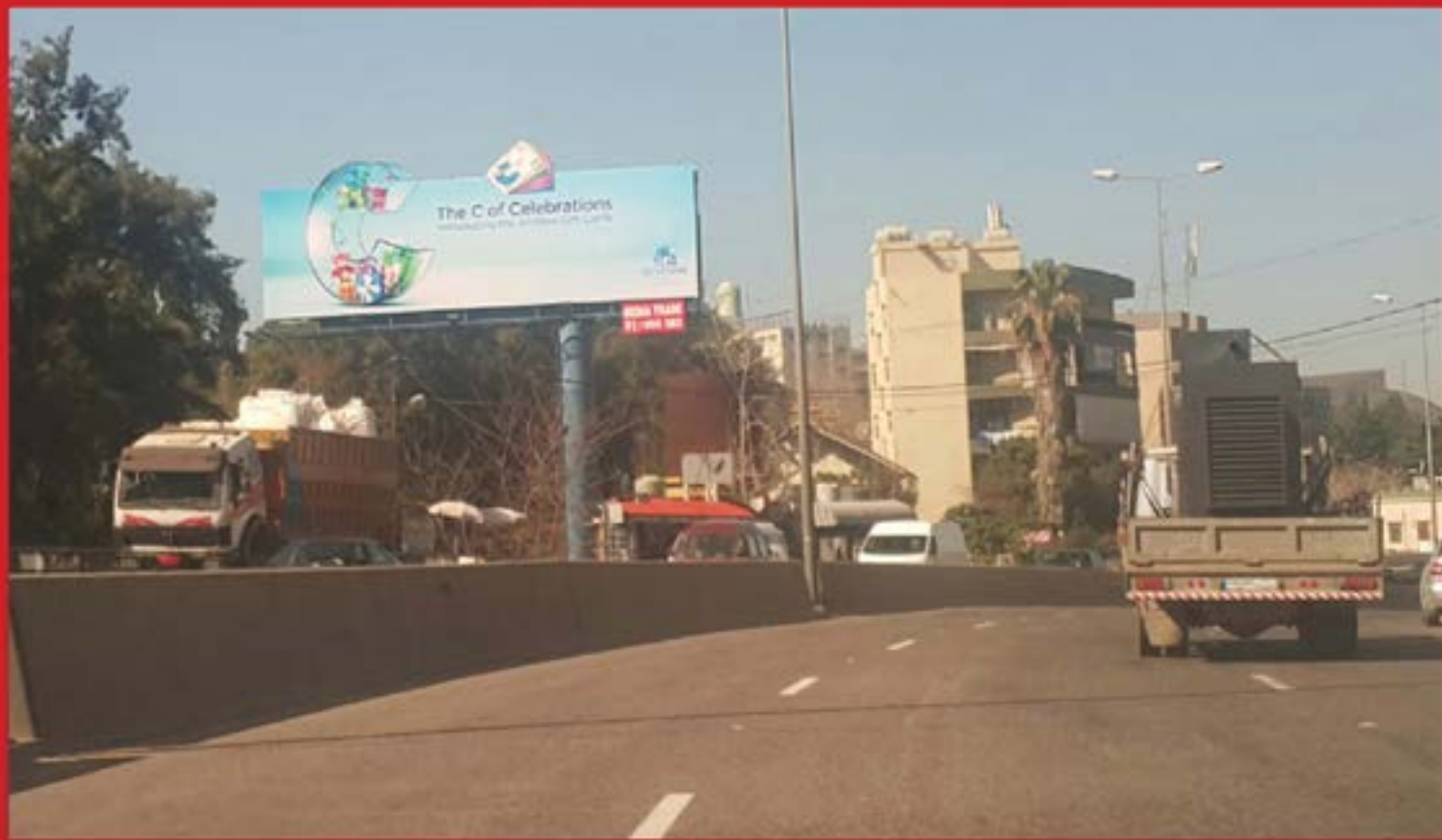
**LOCATION:** GHAZIR NEAR CASINO DU LIBAN  
**DIRECTION:** BEIRUT  
**SIZE:** 25.00 X 1.75



**MEDIA TRADE**

**701 A**

**LOCATION:** JAMHOUR  
**DIRECTION:** ZAHLE  
**SIZE:** 14.70 X 4.30



**MEDIA TRADE**

**701 B**

**LOCATION:** JAMHOUR  
**DIRECTION:** BEIRUT  
**SIZE:** 14.70 X 4.30





**MEDIA TRADE**

**702 A**

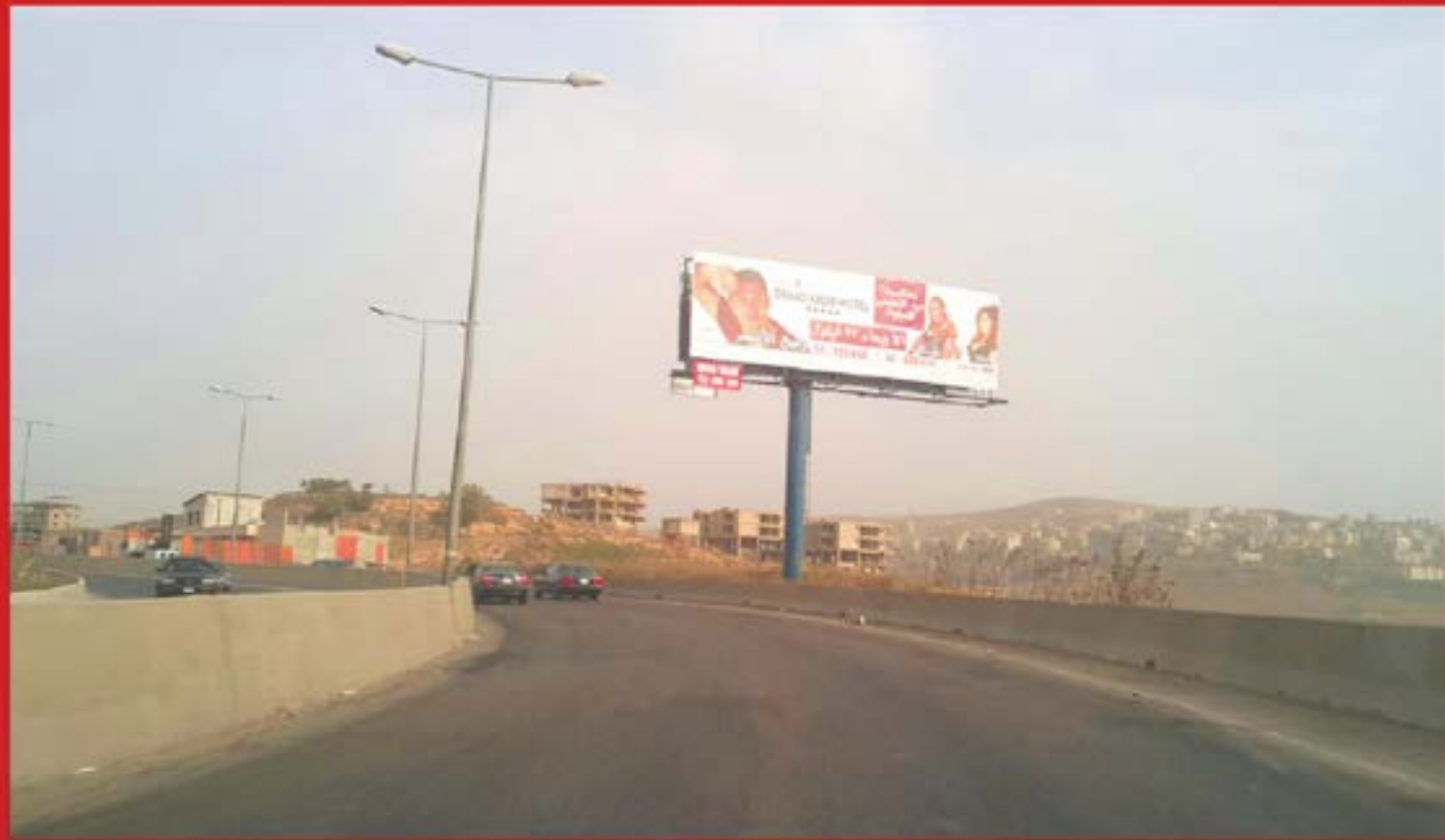
**LOCATION:** ARAYA DAHR EL WAHCH  
**DIRECTION:** BEIRUT  
**SIZE:** 14.70 X 4.30



**MEDIA TRADE**

**702 B**

**LOCATION:** ARAYA DAHR EL WAHCH  
**DIRECTION:** ZAHLE  
**SIZE:** 14.70 X 4.30



**MEDIA TRADE**

**703 A**

**LOCATION:** BHAMDOUN HIGHWAY  
**DIRECTION:** ZAHLE  
**SIZE:** 14.70 X 4.30





**MEDIA TRADE**

**703 B**

**LOCATION:** BHAMDOUN HIGHWAY  
**DIRECTION:** BEIRUT  
**SIZE:** 14.70 X 4.30



**MEDIA TRADE**

**704 A**

**LOCATION:** ARAYA BEFORE POLICE STATION  
**DIRECTION:** BEIRUT  
**SIZE:** 14.70 X 4.30



**MEDIA TRADE**

**705 A**

**LOCATION: JAMHOUR**  
**DIRECTION: ZAHLE**  
**SIZE: 14.70 X 4.30**





**MEDIA TRADE**

**707 B**

**LOCATION:** ARAYA  
**DIRECTION:** BEIRUT  
**SIZE:** 14.70 X 6.30



**MEDIA TRADE**

**709 B**

**LOCATION:** ARAYA - SAKR STATION  
**DIRECTION:** BEIRUT  
**SIZE:** 14.70 X 4.30



**MEDIA TRADE**

**710 C**

**LOCATION:** ARAYA - BEJANI MARKET  
**DIRECTION:** BEIRUT AND ZAHLE  
**SIZE:** 14.70 X 4.30





**MEDIA TRADE**

**715 A**

**LOCATION:** ARAYA  
**DIRECTION:** ZAHLE  
**SIZE:** 9.00 X 4.30



**MEDIA TRADE**

**715 B**

**LOCATION: ARAYA**  
**DIRECTION: BEIRUT**  
**SIZE: 9.00 X 4.30**



**MEDIA TRADE**

**716 B**

**LOCATION:** ARAYA BEFORE DÉLIVRANDE SCHOOL  
**DIRECTION:** ZAHLE  
**SIZE:** 7.50 X 19.00





**MEDIA TRADE**

**718 A**

**LOCATION:** ARAYA AFTER MAREDO  
**DIRECTION:** BEIRUT  
**SIZE:** 8.00 X 3.00



**MEDIA TRADE**

**718 B**

**LOCATION:** ARAYA BEFORE MAREDO  
**DIRECTION:** ZAHLE  
**SIZE:** 8.00 X 3.00



**MEDIA TRADE**

**726 C**

**LOCATION:** ARAYA NEAR POLICE STATION  
**DIRECTION:** ZAHLE - BEIRUT  
**SIZE:** 14.70 X 4.30





**MEDIA TRADE**

**727 A**

**LOCATION:** ARAYA AFTER KARMEH RESTAURANT  
**DIRECTION:** BEIRUT  
**SIZE:** 14.70 X 4.30



**MEDIA TRADE**

**727 B**

**LOCATION:** ARAYA AFTER KARMEH RESTAURANT  
**DIRECTION:** ZAHLE  
**SIZE:** 14.70 X 4.30



**MEDIA TRADE**

**728 A**

**LOCATION:** ARAYA MAREDO RESTAURANT  
**DIRECTION:** BEIRUT  
**SIZE:** 14.70 X 4.30





**MEDIA TRADE**

**728 B**

**LOCATION:** ARAYA MAREDO RESTAURANT  
**DIRECTION:** ZAHLE  
**SIZE:** 14.70 X 4.30

**BEKAA**





**MEDIA TRADE**

**301 A**

**LOCATION:** ZAHLE SOCIAL SECURITY

**DIRECTION:** ZAHLE

**SIZE:** 14.70 X 4.30





**MEDIA TRADE**

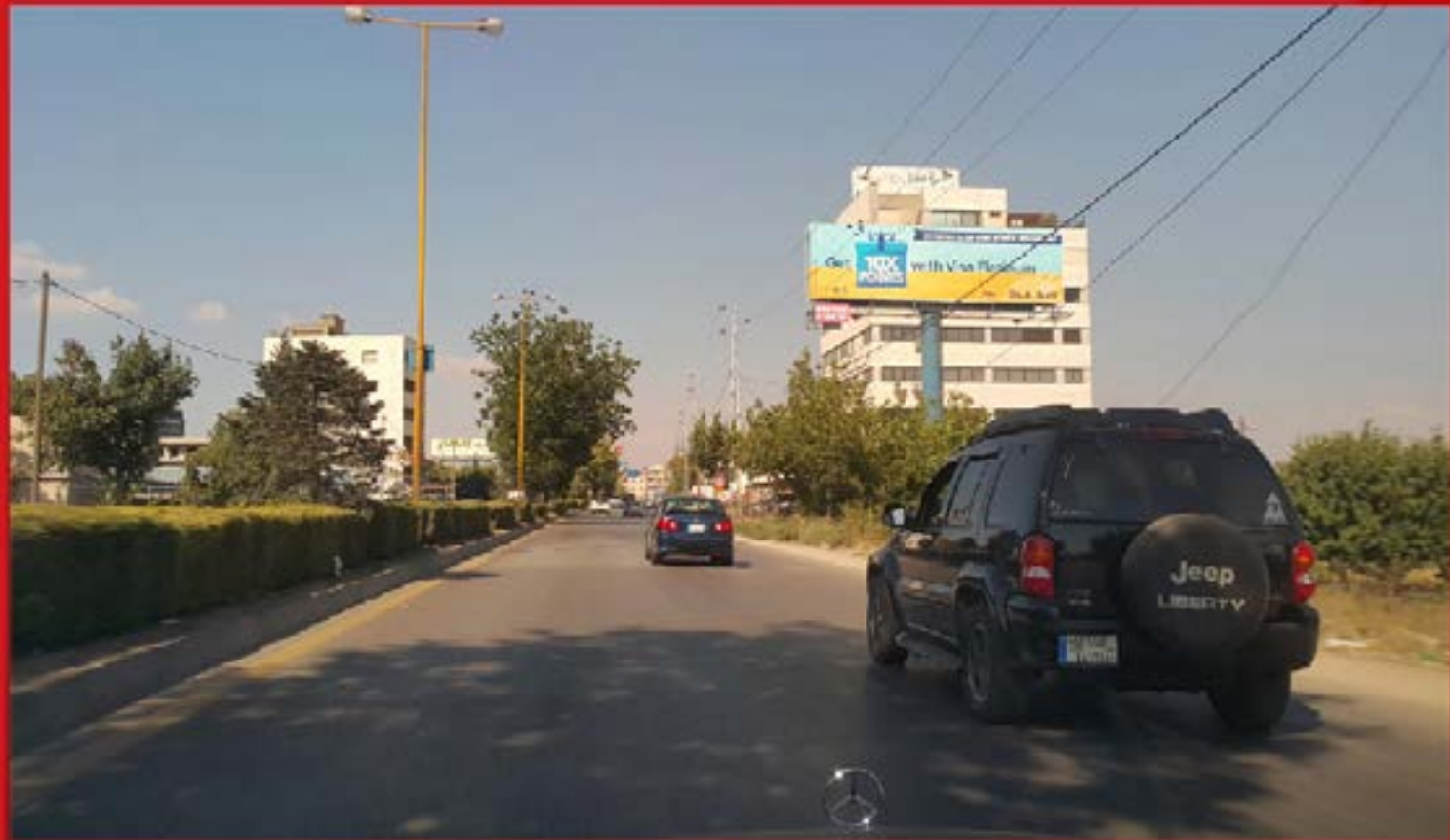
**301 B**

**LOCATION:** ZAHLE SOCIAL SECURITY

**DIRECTION:** BEIRUT

**SIZE:** 14.70 X 4.30

**PRICE:**



**MEDIA TRADE**

**302 A**

**LOCATION:** ZAHLE ENTRANCE

**DIRECTION:** ZAHLE

**SIZE:** 14.70 X 4.30



**MEDIA TRADE**

**302 B**

**LOCATION:** ZAHLE ENTRANCE  
**DIRECTION:** BEIRUT  
**SIZE:** 14.70 X 4.30





**MEDIA TRADE**

**303 A**

**LOCATION: ZAHLE DOWN TOWN**

**DIRECTION: ZAHLE**

**SIZE: 14.70 X 4.30**



**MEDIA TRADE**

**305 A**

**LOCATION: KSARA**  
**DIRECTION: ZAHLE**  
**SIZE: 14.70 X 6.30**



Winston



**MEDIA TRADE**

**305 B**

**LOCATION:** KSARA  
**DIRECTION:** BEIRUT  
**SIZE:** 14.70 X 6.30





**MEDIA TRADE**

**306 B**

**LOCATION:** ZAHLE DOWN TOWN - BERDAWNEH  
**DIRECTION:** BEIRUT  
**SIZE:** 8.00 X 10.00



**MEDIA TRADE**

**307 A**

**LOCATION:** ZAHLE ( STARGATE CINEMA )

**DIRECTION:** ZAHLE

**SIZE:** 14.70 X 4.30



**MEDIA TRADE**

**309 B**

**LOCATION:** ZAHLE DOWN TOWN  
**DIRECTION:** ZAHLE  
**SIZE:** 8.00 X 10.00





**MEDIA TRADE**

**310 B**

**LOCATION:** ZAHLE DOWN TOWN  
**DIRECTION:** ZAHLE  
**SIZE:** 16.00 X 4.60



**MEDIA TRADE**

**311 B**

**LOCATION:** FERSOL  
**DIRECTION:** BAALBAK  
**SIZE:** 5.00 X 10.00



**MEDIA TRADE**

**312 A**

**LOCATION:** ZAHLE CAFFE NAJJAR  
**DIRECTION:** BEIRUT  
**SIZE:** 13.00 X 13.00





**MEDIA TRADE**

**315 B**

**LOCATION:** ZAHLE ENTRANCE - HOCH EL OMARA  
**DIRECTION:** ZAHLE  
**SIZE:** 10.50 X 14.00



**MEDIA TRADE**

**315 A**

**LOCATION:** ZAHLE - MANARA  
**DIRECTION:** BEIRUT  
**SIZE:** 12.00 X 16.00



**MEDIA TRADE**

**317 A**

**LOCATION:** ZAHLE - KARAK  
**DIRECTION:** BAALBAK  
**SIZE:** 8.00 X 10.00





**MEDIA TRADE**

**317 B**

**LOCATION:** ZAHLE - KARAK  
**DIRECTION:** ZAHLE  
**SIZE:** 8.20 X 8.60



**MEDIA TRADE**

**319 A**

**LOCATION:** ZAHLE HIGHWAY  
**DIRECTION:** BEIRUT  
**SIZE:** 7.50 X 11.00



**MEDIA TRADE**

**319 B**

**LOCATION:** ZAHLE HIGHWAY  
**DIRECTION:** ZAHLE  
**SIZE:** 7.50 X 11.00





**MEDIA TRADE**

**320 A**

**LOCATION:** ZAHLE HIGHWAY - FERZOL  
**DIRECTION:** BEIRUT  
**SIZE:** 6.50 X 12.50



**MEDIA TRADE**

**320 B**

**LOCATION:** ZAHLE HIGHWAY - FERZOL  
**DIRECTION:** BEIRUT  
**SIZE:** 6.50 X 12.50



**MEDIA TRADE**

**321 A**

**LOCATION:** ZAHLE PARKING  
**DIRECTION:** BEIRUT  
**SIZE:** 27.00 X 3.20





**MEDIA TRADE**

**322 A**

**LOCATION:** ZAHLE PARKING  
**DIRECTION:** ZAHLE  
**SIZE:** 14.50 X 3.20



**MEDIA TRADE**

**323 A**

**LOCATION:** ZAHLE PARKING  
**DIRECTION:** ZAHLE  
**SIZE:** 10.30 X 3.20



**MEDIA TRADE**

**324 A**

**LOCATION:** ZAHLE ENTRANCE  
**DIRECTION:** ZAHLE  
**SIZE:** 14.70 X 4.30





**MEDIA TRADE**

**324 B**

**LOCATION:** ZAHLE ENTRANCE  
**DIRECTION:** BEIRUT  
**SIZE:** 14.70 X 4.30



**MEDIA TRADE**

**325 A**

**LOCATION:** ZAHLE DOWN TOWN  
**DIRECTION:** ZAHLE  
**SIZE:** 14.00 X 6.00



**MEDIA TRADE**

**326 A**

**LOCATION:** ZAHLE BERDAWNE  
**DIRECTION:** ZAHLE  
**SIZE:** 14.70 X 4.30





**MEDIA TRADE**

**326 B**

**LOCATION:** ZAHLE BERDAWNE  
**DIRECTION:** BERDAWNE  
**SIZE:** 14.70 X 4.30



**MEDIA TRADE**

**327 A**

**LOCATION:** ZAHLE  
**DIRECTION:** ZAHLE  
**SIZE:** 12.00 X 4.00



**MEDIA TRADE**

**327 B**

**LOCATION:** ZAHLE  
**DIRECTION:** BEIRUT  
**SIZE:** 12.00 X 4.00





**MEDIA TRADE**

**328 A**

**LOCATION:** ZAHLE INDUSTRIAL CITY  
**DIRECTION:** BAALBAK  
**SIZE:** 8.00 X 10.00



**MEDIA TRADE**

**328 B**

**LOCATION:** ZAHLE INDUSTRIAL CITY  
**DIRECTION:** CHTAURA  
**SIZE:** 8.00 X 10.00



**MEDIA TRADE**

**328 C**

**LOCATION:** ZAHLE INDUSTRIAL CITY  
**DIRECTION:** INDUSTRIAL CITY  
**SIZE:** 8.00 X 10.00





**MEDIA TRADE**

**329 C**

**LOCATION:** ZAHLE INDUSTRIAL CITY  
**DIRECTION:** INDUSTRIAL CITY  
**SIZE:** 14.70 X 4.30

LONDON  
& ESCAYA  
ZINO  
SEXY&CO  
0%

عن زيبه

FUGUE NEW LONDON  
RUSH & ESCAYA  
SEXY&CO  
CAZZINO 50%

MEDIA TRADE  
01 514 333

FUGUE  
NEW LONDON  
RUSH & ESCAYA  
CAZZINO  
SEXY&CO  
50%

MEDIA TRADE  
01 514 333



MEDIA TRADE

330 A

LOCATION: ZAHLE ENTRANCE  
DIRECTION: ZAHLE  
SIZE: 4.00 X 6.00



**MEDIA TRADE**

**330 B**

**LOCATION:** ZAHLE HOCH EL OMARA ENTRANCE

**DIRECTION:** BEIRUT

**SIZE:** 4.00 X 6.00

**PRICE:** 1000 \$





**MEDIA TRADE**

**332 A**

**LOCATION:** ZAHLE HIGHWAY NEAR MC DONALDD  
**DIRECTION:** BEIRUT  
**SIZE:** 14.70 X 4.30



**MEDIA TRADE**

**335 A**

**LOCATION:** FERZOL HIGHWAY  
**DIRECTION:** ZAHLE  
**SIZE:** 14.70 X 4.30



**MEDIA TRADE**

**335 A**

**LOCATION:** FERZOL HIGHWAY

**DIRECTION:** ZAHLE

**SIZE:** 14.70 X 4.30





**MEDIA TRADE**

**335 B**

**LOCATION:** FERZOL HIGHWAY  
**DIRECTION:** BAALBAK  
**SIZE:** 14.70 X 4.30



**MEDIA TRADE**

**336 A**

**LOCATION:** FERZOL HIGHWAY  
**DIRECTION:** ZAHLE  
**SIZE:** 12.25 X 4.30



**MEDIA TRADE**

**336 B**

**LOCATION:** FERZOL HIGHWAY  
**DIRECTION:** BAALBAK  
**SIZE:** 12.25 X 4.30





**MEDIA TRADE**

**337 A**

**LOCATION:** HEZZERTA  
**DIRECTION:** BAALBAK  
**SIZE:** BEIRUT



**MEDIA TRADE**

**337 B**

**LOCATION:** HEZZERTA  
**DIRECTION:** ZAHLE  
**SIZE:** BEIRUT



**MEDIA TRADE**

**339 B**

**LOCATION:** ZAHLE AUDI BANK BLDG  
**DIRECTION:** DOWNTOWN  
**SIZE:** 7.50 X 16.00





**MEDIA TRADE**

**330 B**

**LOCATION:** ZAHLE HOCH EL OMARA ENTRANCE  
**DIRECTION:** BEIRUT  
**SIZE:** 4.00 X 6.00



**MEDIA TRADE**

**340 A&B**

**LOCATION:** ZAHLE - HOCH EL OMARA  
**DIRECTION:** ZAHLE  
**SIZE:** 12.00 X 10.00



**MEDIA TRADE**

**340 A**

**LOCATION:** ZAHLE - HOCH EL OMARA  
**DIRECTION:** ZAHLE  
**SIZE:** 12.00 X 10.00





**MEDIA TRADE**

**340 A&B**

**LOCATION:** ZAHLE - HOCH EL OMARA  
**DIRECTION:** ZAHLE  
**SIZE:** 12.00 X 10.00



**MEDIA TRADE**

**340 B**

**LOCATION:** ZAHLE - HOCH EL OMARA  
**DIRECTION:** ZAHLE  
**SIZE:** 12.00 X 10.00



**MEDIA TRADE**

**340 C**

**LOCATION:** ZAHLE - HOCH EL OMARA  
**DIRECTION:** ZAHLE  
**SIZE:** 12.00 X 10.00





**MEDIA TRADE**

**340 C&D**

**LOCATION:** ZAHLE - HOCH EL OMARA  
**DIRECTION:** ZAHLE  
**SIZE:** 12.00 X 10.00



**MEDIA TRADE**

**340 D**

**LOCATION:** ZAHLE - HOCH EL OMARA  
**DIRECTION:** ZAHLE  
**SIZE:** 12.00 X 10.00



**MEDIA TRADE**

**341 B**

**LOCATION: HEZZERTA**  
**DIRECTION: ZAHLE**  
**SIZE: 14.70 X 4.30**





**MEDIA TRADE**

**332 B**

**LOCATION:** ZAHLE HIGHWAY NEAR MC DONALDD

**DIRECTION:** ZAHLE

**SIZE:** 14.70 X 4.30



**MEDIA TRADE**

**343**

**LOCATION:** ZAHLE PARKING - BERDAWNE  
**DIRECTION:** ZAHLE DT  
**SIZE:** 23.00 X 2.80



SALE  
01 995 363

ORIENT  
QUEEN  
SUMMER 2018

01 995 999



01 995 999

ORIENT  
QUEEN  
SUMMER 2018

01 995 999



01 995 999

ORIENT  
QUEEN  
SUMMER 2018

01 995 999



01 995 999



**MEDIA TRADE**

**344 A**

**LOCATION:** ZAHLE - STARGATE  
**DIRECTION:** ZAHLE  
**SIZE:** 14.70 X 4.30





**MEDIA TRADE**

**344 B**

**LOCATION:** ZAHLE - STARGATE  
**DIRECTION:** ZAHLE  
**SIZE:** 14.70 X 4.30



**MEDIA TRADE**

**335 B**

**LOCATION:** FERZOL HIGHWAY  
**DIRECTION:** BAALBAK  
**SIZE:** 14.70 X 4.30



**MEDIA TRADE**

**345 A1**

**LOCATION:** ZAHLE - STARGATE  
**DIRECTION:** ZAHLE  
**SIZE:** 8.00 X 3.00





**MEDIA TRADE**

**345 A2**

**LOCATION:** ZAHLE - STARGATE  
**DIRECTION:** ZAHLE  
**SIZE:** 8.00 X 3.00



**MEDIA TRADE**

**345 A3**

**LOCATION:** ZAHLE - STARGATE  
**DIRECTION:** ZAHLE  
**SIZE:** 8.00 X 3.00



**MEDIA TRADE**

**345 B1**

**LOCATION:** ZAHLE - STARGATE  
**DIRECTION:** ZAHLE  
**SIZE:** 8.00 X 3.00





التيار الوطني الحر

مجلس النواب

MEDIA TRADE  
01 595 363

ORIENT  
QUEEN

01 569 999



ORIENT  
QUEEN

01965 999



ORIENT  
QUEEN

01 569 999



MEDIA TRADE

345 B2

LOCATION: ZAHLE - STARGATE  
DIRECTION: ZAHLE  
SIZE: 8.00 X 3.00



**MEDIA TRADE**

**345 B3**

**LOCATION:** ZAHLE - STARGATE  
**DIRECTION:** ZAHLE  
**SIZE:** 8.00 X 3.00



**MEDIA TRADE**

**335 A**

**LOCATION:** FERZOL HIGHWAY  
**DIRECTION:** ZAHLE  
**SIZE:** 14.70 X 4.30





**MEDIA TRADE**

**355 A**

**LOCATION:** ZAHLE ENTRANCE

**DIRECTION:** ZAHLE

**SIZE:** 12.00 X 15.00

**PRICE:** 5000 \$



**MEDIA  
TRADE**



**MEDIA TRADE**

**356 A**

**LOCATION:** ZAHLE ENTRANCE FACING ADLEIH

**DIRECTION:** ZAHLE

**SIZE:** 8.40 X 6.00

**PRICE:** 3000 \$



**MEDIA TRADE**

**357 B**

**LOCATION:** SAADNAYEL - ZAHLE HIGHWAY  
**DIRECTION:** BEIRUT  
**SIZE:** 10.00 X 5.00





# MEDIA TRADE

First Regional Outdoor Media In Lebanon ☎ /695 383



**MEDIA TRADE**

**358 A**

**LOCATION:** ZAHLE - CHTAURA HIGHWAY  
**DIRECTION:** BEIRUT  
**SIZE:** 10.00 X 5.00



**MEDIA TRADE**

**359 A**

**LOCATION:** KSARA - ZAHLE INTERSECTION  
**DIRECTION:** BEIRUT  
**SIZE:** 10.00 X 5.00



**MEDIA TRADE**

**359 B**

**LOCATION:** KSARA - ZAHLE INTERSECTION

**DIRECTION:** ZAHLE

**SIZE:** 10.00 X 5.00





**MEDIA TRADE**

**360 A**

**LOCATION:** ZAHLE - KSARA  
**DIRECTION:** CHTAURA  
**SIZE:** 3.00 X 6.00



**MEDIA TRADE**

**361 B**

**LOCATION:** ZAHLE - KSARA  
**DIRECTION:** ZAHLE  
**SIZE:** 3.00 X 6.00



**MEDIA TRADE**

**501 A**

**LOCATION:** CHTAURA NEAR GHAZALI SUPERMARKET  
**DIRECTION:** BEIRUT  
**SIZE:** 14.70X 4.30





WE ARE NOW  
RECRUITING



**MEDIA TRADE**

**501 B**

**LOCATION:** CHTAURA NEAR GHAZALI SUPERMARKET  
**DIRECTION:** ZAHLE  
**SIZE:** 14.70X 4.30



**MEDIA TRADE**

**503 A**

**LOCATION:** CHTAURA WEST BEKAA TURN  
**DIRECTION:** BEIRUT  
**SIZE:** 14.70 X 4.30



**MEDIA TRADE**

**503 B**

**LOCATION:** CHTAURA WEST BEKAA TURN  
**DIRECTION:** ZAHLE  
**SIZE:** 14.70 X 4.30





**MEDIA TRADE**

**504 A**

**LOCATION:** MREIJAT FACING HEDWAN

**DIRECTION:** ZAHLE

**SIZE:** 14.70 X 4.30



**MEDIA TRADE**

**504 B**

**LOCATION:** MREIJAT FACING HEDWAN  
**DIRECTION:** BEIRUT  
**SIZE:** 14.70 X 4.30



**MEDIA TRADE**

**505 B**

**LOCATION:** MREIJAT - CHTAURA ENTRANCE  
**DIRECTION:** ZAHLE  
**SIZE:** 8.00 X 10.00





**MEDIA TRADE**

**506 A**

**LOCATION: MEKSI**  
**DIRECTION: BEIRUT**  
**SIZE: 20.30 X 7.30**



**MEDIA TRADE**

**506 B**

**LOCATION:** MEKSI  
**DIRECTION:** ZAHLE  
**SIZE:** 20.30 X 7.30



**MEDIA TRADE**

**507 B**

**LOCATION: MEHSI**  
**DIRECTION: ZAHLE**  
**SIZE: 15.70 X 8.30**





**MEDIA TRADE**

**508 B**

**LOCATION:** CHTAURA FACING ASSI SPORT  
**DIRECTION:** ZAHLE  
**SIZE:** 10.00 X 4.00



**MEDIA TRADE**

**510 A**

**LOCATION:** CHTAURA FACING ASSI SPORT  
**DIRECTION:** ZAHLE  
**SIZE:** 8.00 X 10.00



**MEDIA TRADE**

**511 A**

**LOCATION:** CHTAURA - TAALABAYA  
**DIRECTION:** ZAHLE  
**SIZE:** 14.70 X 4.30





**MEDIA TRADE**

**511 B**

**LOCATION:** CHTAURA - TAALABAYA  
**DIRECTION:** BEIRUT  
**SIZE:** 14.70 X 4.30



**MEDIA TRADE**

**512 B**

**LOCATION:** CHTAURA - TAANAYEL  
**DIRECTION:** ZAHLE  
**SIZE:** 7.50 X 12.50



**MEDIA TRADE**

**513 B**

**LOCATION:** CHTAURA - SAADNAYEL  
**DIRECTION:** ZAHLE  
**SIZE:** 7.50 X 12.50





**MEDIA TRADE**

**515 A**

**LOCATION:** CHTAURA FACING MASSABKI HOTEL  
**DIRECTION:** BEIRUT  
**SIZE:** 4.00 X 6.00



**MEDIA TRADE**

**515 B**

**LOCATION:** CHTAURA FACING MASSABKI HOTEL  
**DIRECTION:** ZAHLE  
**SIZE:** 4.00 X 6.00



**MEDIA TRADE**

**516 B**

**LOCATION: SAADNAYEL**  
**DIRECTION: BEIRUT**  
**SIZE: 7.00 X 11.00**





**MEDIA TRADE**

**517 B**

**LOCATION: TAANAYEL HIGHWAY**  
**DIRECTION: MASNA**  
**SIZE: 14.70 X 4.30**



**MEDIA TRADE**

**517 A**

**LOCATION:** TAANAYEL HIGHWAY  
**DIRECTION:** CHTAURA  
**SIZE:** 14.70 X 4.30



**MEDIA TRADE**

**518 A**

**LOCATION: TAANAYEL HIGHWAY**  
**DIRECTION: CHTAURA**  
**SIZE: 8.00 X 4.00**





**MEDIA TRADE**  
71  
01 / 695 383



**MEDIA TRADE**

**518 B**

**LOCATION:** TAANAYEL HIGHWAY  
**DIRECTION:** MASNA  
**SIZE:** 8.00 X 4.00



**MEDIA TRADE**

OUTDOOR MEDIA & DIGITAL PRINTING



**MEDIA TRADE**

**519 A**

**LOCATION:** TAANAYEL - AFTER CASCADEA

**DIRECTION:** BEIRUT

**SIZE:** 14.70 X 4.30



**MEDIA TRADE**

**519 B**

**LOCATION:** TAANAYEL - BEFORE CASCADE  
**DIRECTION:** BAALBAK  
**SIZE:** 14.70 X 4.30





**MEDIA TRADE**

**520 B**

**LOCATION:** CHITOURI  
**DIRECTION:** CASCADE  
**SIZE:** 10.00 X 5.00



**MEDIA TRADE**

**521 B**

**LOCATION:** CHITOURI  
**DIRECTION:** CASCADE  
**SIZE:** 9.20 X 3.20



**MEDIA TRADE**

**522 B**

**LOCATION:** CHTAURA-SAADNAYEL  
**DIRECTION:** ZAHLE  
**SIZE:** 5.50 X 10.50





**MEDIA TRADE**

**530**

**LOCATION:** MREIJAT  
**DIRECTION:** ZAHLE  
**SIZE:** 25.00 X 2.00



**MEDIA TRADE**

**531**

**LOCATION:** MREIJAT  
**DIRECTION:** BEIRUT  
**SIZE:** 25.00 X 2.00



**MEDIA TRADE**

**601 A**

**LOCATION:** MREJAT  
**DIRECTION:** BEIRUT  
**SIZE:** 14.70 X 4.30





**MEDIA TRADE**

**601 B**

**LOCATION: MREJAT**  
**DIRECTION: ZAHLE**  
**SIZE: 14.70 X 4.30**



**MEDIA TRADE**

**602 A**

**LOCATION:** DAHR EL BAIDAR ( POLICE STATION )  
**DIRECTION:** ZAHLE  
**SIZE:** 14.70 X 4.30



**MEDIA TRADE**

**602 B**

**LOCATION:** DAHR EL BAIDAR ( POLICE STATION )  
**DIRECTION:** BEIRUT  
**SIZE:** 14.70 X 4.30





**MEDIA TRADE**

**603 A**

**LOCATION:** HAMMANA DAHR EL BAIDAR ROAD  
**DIRECTION:** ZAHLE  
**SIZE:** 14.70 X 4.30



**MEDIA TRADE**

**603 B**

**LOCATION:** HAMMANA DAHR EL BAIDAR ROAD  
**DIRECTION:** BEIRUT  
**SIZE:** 14.70 X 4.30



**MEDIA TRADE**

**604 A**

**LOCATION:** FALOUGHA DAHR EL BAI DAR ROAD  
**DIRECTION:** BEIRUT  
**SIZE:** 14.70 X 4.30





**MEDIA TRADE**

**604 B**

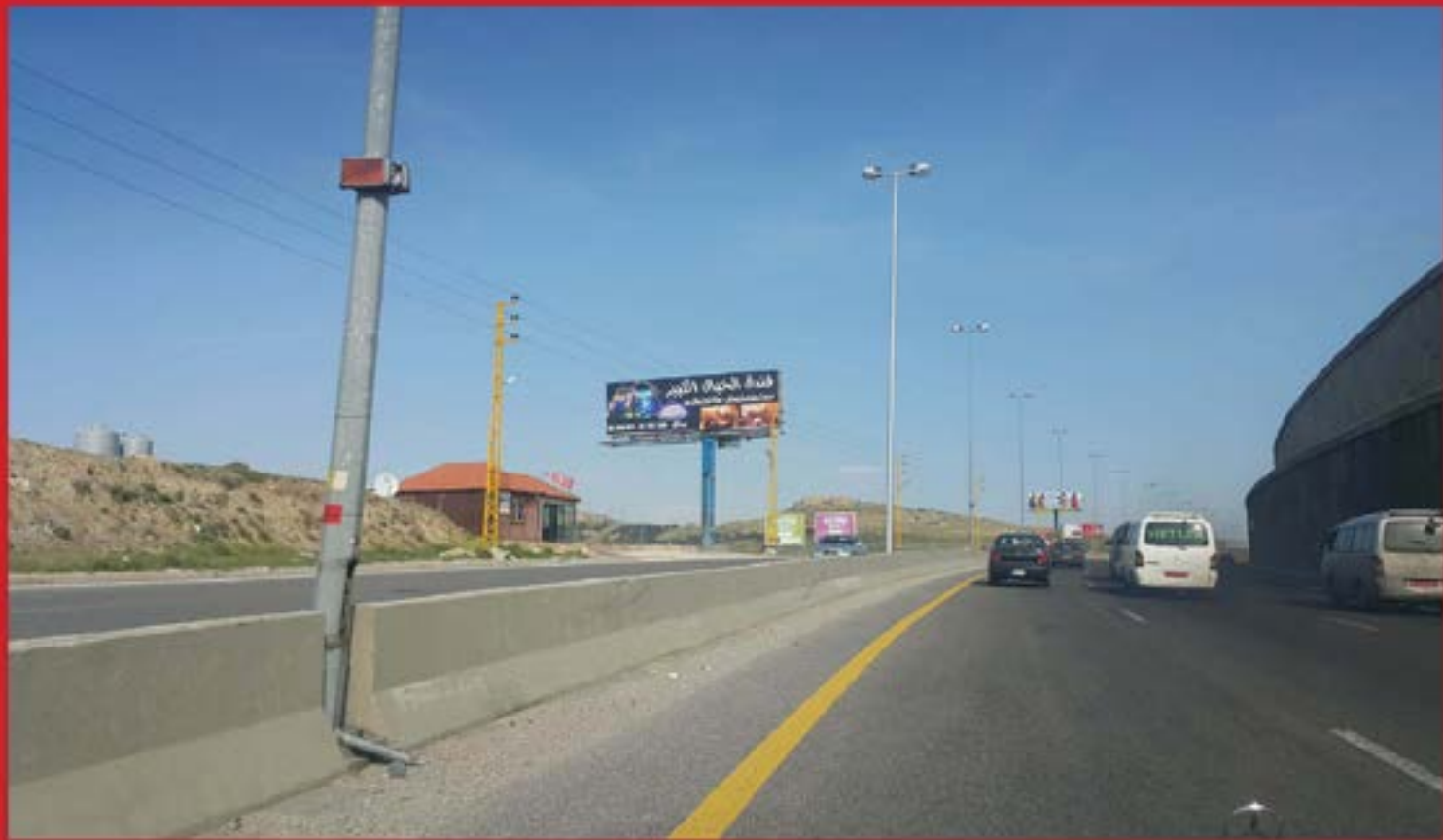
**LOCATION:** FALOUGHA DAHR EL BAI DAR ROAD  
**DIRECTION:** ZAHLE  
**SIZE:** 14.70 X 4.30



**MEDIA TRADE**

**605 A**

**LOCATION:** MDEIREJ HIGHWAY  
**DIRECTION:** BEIRUT  
**SIZE:** 14.70 X 4.30



**MEDIA TRADE**

**605 B**

**LOCATION: MDEIREJ HIGHWAY**  
**DIRECTION: ZAHLE**  
**SIZE: 14.70 X 4.30**





**MEDIA TRADE**

**606 A**

**LOCATION:** DAHR EL BAIDAR HIGHWAY  
**DIRECTION:** BEIRUT  
**SIZE:** 4.00 X 6.00



**MEDIA TRADE**

**606 B**

**LOCATION:** DAHR EL BAIDAR HIGHWAY  
**DIRECTION:** ZAHLE  
**SIZE:** 4.00 X 6.00



**MEDIA TRADE**

**607 A**

**LOCATION:** DAHR EL BAIDAR HIGHWAY  
**DIRECTION:** BEIRUT  
**SIZE:** 14.70 X 4.30





ELIE SABA  
SALE  
50%



**MEDIA TRADE**

**607 B**

**LOCATION:** DAHR EL BAIDAR HIGHWAY  
**DIRECTION:** ZAHLE  
**SIZE:** 14.70 X 4.30



**MEDIA TRADE**

**609 A**

**LOCATION:** DAHR EL BAIDAR HIGHWAY  
**DIRECTION:** BEIRUT  
**SIZE:** 8.00 X 3.00



**MEDIA TRADE**

**609 B**

**LOCATION:** DAHR EL BAIDAR HIGHWAY  
**DIRECTION:** ZAHLE  
**SIZE:** 8.00 X 3.00





**MEDIA TRADE**

**610 A**

**LOCATION:** HAMMANA DAHR EL BAIDAR  
**DIRECTION:** BEIRUT  
**SIZE:** 8.00 X 4.00



**MEDIA TRADE**

**610 B**

**LOCATION:** HAMMANA DAHR EL BAIDAR  
**DIRECTION:** ZAHLE  
**SIZE:** 8.00 X 4.00



**MEDIA TRADE**

**611 A**

**LOCATION:** FALOUGHA DAHR EL BAIDAR  
**DIRECTION:** ZAHLE  
**SIZE:** 8.00 X 3.00





**MEDIA TRADE**

**611 B**

**LOCATION:** FALOUGHA DAHR EL BAIDAR  
**DIRECTION:** BEIRUT  
**SIZE:** 8.00 X 3.00



**MEDIA TRADE**

**612 A**

**LOCATION:** HAMMANA DAHR EL BAIDAR  
**DIRECTION:** BEIRUT  
**SIZE:** 8.00 X 4.00



**MEDIA TRADE**

**612 B**

**LOCATION:** HAMMANA DAHR EL BAIDAR  
**DIRECTION:** ZAHLE  
**SIZE:** 8.00 X 4.00





**MEDIA TRADE**

**613 B**

**LOCATION:** DAHR EL BAIDAR HIGHWAY  
**DIRECTION:** ZAHLE  
**SIZE:** 14.00 X 13.00



**MEDIA TRADE**

**614 A**

**LOCATION:** DAHR EL BAIDAR NEAR GHADIR STN  
**DIRECTION:** ZAHLE  
**SIZE:** 14.70 X 4.30



**MEDIA TRADE**

**614 B**

**LOCATION:** DAHR EL BAIDAR NEAR GHADIR STN  
**DIRECTION:** BEIRUT  
**SIZE:** 1470 X4.30





**MEDIA TRADE**

**615 A**

**LOCATION:** DAHR EL BAIDAR  
**DIRECTION:** ZAHLE  
**SIZE:** 14.70 X4.30



**MEDIA TRADE**

**615 B**

**LOCATION:** DAHR EL BAIDAR  
**DIRECTION:** BEIRUT  
**SIZE:** 14.70 X4.30



**MEDIA TRADE**

**616 A**

**LOCATION: SOFAR BRIDGE**  
**DIRECTION: ZAHLE**  
**SIZE: 14.70 X4.30**





**MEDIA TRADE**

**616 B**

**LOCATION:** SOFAR BRIDGE  
**DIRECTION:** BEIRUT  
**SIZE:** 14.70 X4.30



**MEDIA TRADE**

**617 A**

**LOCATION:** SOFAR BRIDGE  
**DIRECTION:** BEIRUT  
**SIZE:** 14.70 X4.30



**MEDIA TRADE**

**617 B**

**LOCATION:** SOFAR BRIDGE  
**DIRECTION:** ZAHLE  
**SIZE:** 14.70 X4.30





**MEDIA TRADE**

**620 A**

**LOCATION:** DAHR EL BAIDAR  
**DIRECTION:** BEIRUT  
**SIZE:** 10.00 X 5.00



**MEDIA TRADE**

**621 B**

**LOCATION:** DAHR EL BAIDAR - FALOUGHA  
**DIRECTION:** BEKAA  
**SIZE:** 10.00 X 4.00



**MEDIA TRADE**

**622 A**

**LOCATION:** SOFAR HIGHWAY EXIT  
**DIRECTION:** ZAHLE  
**SIZE:** 1470 X4.30





**MEDIA TRADE**

**622 B**

**LOCATION:** SOFAR HIGHWAY ENTRANCE  
**DIRECTION:** BEIRUT  
**SIZE:** 1470 X4.30



**MEDIA TRADE**

**208 A**

**LOCATION:** WEST BEKAA OMAR EL MOKHTAR  
**DIRECTION:** DAMASCUS  
**SIZE:** 8.00 X 4.00



**MEDIA TRADE**

**208 B**

**LOCATION:** WEST BEKAA OMAR EL MOKHTAR  
**DIRECTION:** BEIRUT  
**SIZE:** 8.00 X 4.00





**MEDIA TRADE**

**209 A**

**LOCATION:** WEST BEKAA OMAR EL MOKHTAR  
**DIRECTION:** BEIRUT  
**SIZE:** 10.00 X 7.00



**MEDIA TRADE**

**210 A**

**LOCATION: WEST BEKAA**  
**DIRECTION: JEB JANNINE**  
**SIZE: 10.00 X 4.30**



**MEDIA TRADE**

**210 B**

**LOCATION:** WEST BEKAA  
**DIRECTION:** KEFRAYA  
**SIZE:** 10.00 X 4.30





**MEDIA TRADE**

**211 A**

**LOCATION:** JEB JANNINE  
**DIRECTION:** KEFRAYA  
**SIZE:** 10.00 X 4.30



**MEDIA TRADE**

OUTDOOR MEDIA & DIGITAL PRINTING



**MEDIA TRADE**

**212 A**

**LOCATION:** JEB JANNINE DOWN TOWN  
**DIRECTION:** BEKAA  
**SIZE:** 14.70 X 4.30



**MEDIA TRADE**

**212 B**

**LOCATION:** JEB JANNINE DOWN TOWN  
**DIRECTION:** LALA AND BAALLOUL  
**SIZE:** 14.70 X 4.30





**MEDIA TRADE**

**213 A**

**LOCATION:** JEB JANNINE ENTRANCE  
**DIRECTION:** JEB JANNINE  
**SIZE:** 14.70 X 4.30



**MEDIA TRADE**

**214 A**

**LOCATION:** JEB JANNINE  
**DIRECTION:** JEBJANNINE  
**SIZE:** 10.00 X 4.30



**MEDIA TRADE**

**214 B**

**LOCATION:** JEB JANNINE  
**DIRECTION:** DAMASCUS  
**SIZE:** 10.00 X 4.30





**MEDIA TRADE**

**216 A**

**LOCATION:** KEFRAYA ENTANCE  
**DIRECTION:** BEKAA WEST  
**SIZE:** 14.70 X 4.30



**MEDIA TRADE**

**216 B**

**LOCATION:** KEFRAYA EXIT  
**DIRECTION:** BEIRUT  
**SIZE:** 14.70 X 4.30



**MEDIA TRADE**

71  
01 / 695 383



**MEDIA TRADE**

**217 A**

**LOCATION:** KEFRAYA JEB JANNINE EXIT  
**DIRECTION:** BEIRUT  
**SIZE:** 14.70 X 4.30





**MEDIA TRADE**  
71/ 695 383



**MEDIA TRADE**

**217 B**

**LOCATION:** KEFRAYA JEB JANNINE ENTRANCE  
**DIRECTION:** WEST BEKAA  
**SIZE:** 14.70 X 4.30



**MEDIA TRADE**

**218 A**

**LOCATION:** KEFRAYA ENTRANCE  
**DIRECTION:** WEST BEKAA  
**SIZE:** 14.70 X 4.30



**MEDIA TRADE**

**218 B**

**LOCATION:** KEFRAYA EXIT  
**DIRECTION:** BEIRUT  
**SIZE:** 10.25 X 4.30





**MEDIA TRADE**

بِسْمِ اللَّهِ الرَّحْمَنِ الرَّحِيمِ



**MEDIA TRADE**

**219 A**

**LOCATION:** KEFRAYA JEB JANNINE EXIT  
**DIRECTION:** ZAHLE  
**SIZE:** 8.00 X 3.00



**MEDIA TRADE**

**219 B**

**LOCATION:** KEFRAYA JEB JANNINE EXIT  
**DIRECTION:** WEST BEKAA  
**SIZE:** 8.00 X 3.00



**MEDIA TRADE**

**220 A**

**LOCATION:** KEFRAYA JEB JANNINE INTERSECTION  
**DIRECTION:** JEB JANNINE  
**SIZE:** 14.00 X 4.30





**MEDIA TRADE**

**220 B**

**LOCATION:** KEFRAYA JEB JANNINE INTERSECTION  
**DIRECTION:** KEFRAYA  
**SIZE:** 14.00 X 4.30



**MEDIA TRADE**

**222 A**

**LOCATION:** KHIARA NEAR LIU  
**DIRECTION:** JENB JANNINE  
**SIZE:** 14.70 X 4.30



**MEDIA TRADE**

**222 B**

**LOCATION:** WEST BEKAA - OMAR EL MOKHTAR  
**DIRECTION:** CHTAURA  
**SIZE:** 14.70 X 4.30





**MEDIA TRADE**

**223 B**

**LOCATION:** JEBB JANNINE INTERSECTION - AZZE  
**DIRECTION:** WEST BEKAA  
**SIZE:** 10.00 X 5.00



**MEDIA TRADE**

**224 A**

**LOCATION:** WEST BEKAA - AL BIRA - RACHAYA  
NEAR LEB ARMY CHEK POINT  
**DIRECTION:** WEST BEKAA  
**SIZE:** 10.00 X 5.00



**MEDIA TRADE**

**224 B**

**LOCATION:** WEST BEKAA - AL BIRA - RACHAYA  
NEAR LEB ARMY CHEK POINT

**DIRECTION:** WEST BEKAA  
**SIZE:** 4.00 X 5.00





# MEDIA TRADE

First Regional Outdoor Media In Lebanon 71/695 383



**MEDIA TRADE**

**225 A**

**LOCATION:** KAB ELIAS - WEST BEKAA  
**DIRECTION:** WEST BEKAA  
**SIZE:** 10.00 X 5.00

**MEDIA  
TRADE**



**MEDIA TRADE**

**226 AB**

**LOCATION:** AL BIRA - WEST BEKAA  
**DIRECTION:** RACHAYA ← → AZZA  
**SIZE:** 2.00 X 3.00  
(11 FACES RECTO VERSO)





**MEDIA TRADE**

**250 AB**

**LOCATION:** DEIR ZANNOUN - ANJAR  
**DIRECTION:** ANJAR ← → ZAHLE  
**SIZE:** 1.00 X 2.00  
( 30 FACES RECTO VERSO )





**MEDIA TRADE**

**401 A**

**LOCATION: BAALBAK - SARIIN**  
**DIRECTION: CHTAURA**  
**SIZE: 14.70 X 4.30**



**MEDIA TRADE**

**401 B**

**LOCATION: BAALBAK - SARIIN**  
**DIRECTION: BAALBAK**  
**SIZE: 14.70 X 4.30**



**MEDIA TRADE**

**402 A**

**LOCATION:** RAS BAALBAK  
**DIRECTION:** BEIRUT  
**SIZE:** 12.00 X 4.10





**MEDIA TRADE**

**402 B**

**LOCATION:** RIAK  
**DIRECTION:** BAALBAK  
**SIZE:** 10.00 X 5.00



**MEDIA TRADE**

First National Outdoor Media in Lebanon 01/925 303



**MEDIA TRADE**

**403 A**

**LOCATION:** RIAK HIGHWAY

**DIRECTION:** ZAHLE

**SIZE:** 12.25 X 6.00



**MEDIA TRADE**

**403 B**

**LOCATION: BAALBAK**  
**DIRECTION: HERMEL**  
**SIZE: 8.00 X 3.00**





**MEDIA TRADE**

**404 A**

**LOCATION:** RAS BAALBAK  
**DIRECTION:** BAALBAK  
**SIZE:** 14.70 X 4.30



**MEDIA TRADE**

**404 B**

**LOCATION:** RAS BAALBAK  
**DIRECTION:** HERMEL  
**SIZE:** 14.70 X 4.30



**MEDIA TRADE**

**405 A**

**LOCATION:** BAALBAK - DOURIS ENTRANCE  
**DIRECTION:** BAALBAK  
**SIZE:** 14.70 X 4.30





**MEDIA TRADE**

**405 B**

**LOCATION:** BAALBAK - DOURIS ENTRANCE  
**DIRECTION:** BEIRUT  
**SIZE:** 14.70 X 4.30



**MEDIA TRADE**  
OUTDOOR MEDIA & DIGITAL PRINTING



**MEDIA TRADE**

**406 A**

**LOCATION:** DOURIS ENTRANCE  
**DIRECTION:** BAALBAK  
**SIZE:** 14.70 X 4.30



**MEDIA TRADE**

OUTDOOR MEDIA • DIGITAL PRINTING



**MEDIA TRADE**

**406 B**

**LOCATION:** DOURIS ENTRANCE  
**DIRECTION:** ZAHLE  
**SIZE:** 14.70 X 4.30





**MEDIA TRADE**

**407 A**

**LOCATION: DOURIS**  
**DIRECTION: BAALBAK**  
**SIZE: 4.00 X 6.00**



**MEDIA TRADE**

**407 B**

**LOCATION: DOURIS**  
**DIRECTION: BEIRUT**  
**SIZE: 4.00 X 6.00**

سنتر جددوي  
**JADDOUH  
TOYS**  
**50% OFF**  
على جميع الألعاب  
وزينة الميلاد  
76514410  
03514410  
فرع اول: صفاة، الطريق العام  
فرع ثاني: زحلة، المصافين  
03022155



**MEDIA TRADE**

**408 B**

**LOCATION: BRITAL**  
**DIRECTION: ZAHLE**  
**SIZE: 7.00 X 12.10**





**MEDIA TRADE**

**409 A**

**LOCATION:** IAAT - DEIR EL AHMAR  
**DIRECTION:** IAAT  
**SIZE:** 14.70 X 4.30



**MEDIA TRADE**

**409 B**

**LOCATION:** IAAT - DEIR EL AHMAR  
**DIRECTION:** BECHWAT  
**SIZE:** 14.70 X 4.30



**MEDIA TRADE**

**410 A**

**LOCATION:** RAS BAALBAK  
**DIRECTION:** HERMEL  
**SIZE:** 4.00 X 8.00





**MEDIA TRADE**

**410 B**

**LOCATION:** RAS BAALBAK  
**DIRECTION:** BAALBAK  
**SIZE:** 4.00 X 8.00



**MEDIA TRADE**

**411 A**

**LOCATION:** DEIR EL AHMAR  
**DIRECTION:** IIAAT  
**SIZE:** 4.00 X 6.00



MEDIA TRADE  
71 695 263



**MEDIA TRADE**

**411 B**

**LOCATION:** DEIR EL AHMAR  
**DIRECTION:** DEIR EL AHMAR  
**SIZE:** 4.00 X 6.00





**MEDIA TRADE**

**412 A**

**LOCATION:** BECHWAT - DEIR EL AHMAR  
**DIRECTION:** DEIR EL AHMAR  
**SIZE:** 8.00 X 5.50



**MEDIA TRADE**

**412 B**

**LOCATION:** BECHWAT - DEIR EL AHMAR  
**DIRECTION:** HERMEL  
**SIZE:** 8.00 X 5.50



**MEDIA TRADE**

**413 B**

**LOCATION: BRITAL**  
**DIRECTION: ZAHLE**  
**SIZE: 6.50 X 12.00**





**MEDIA TRADE**

**101 A**

**LOCATION:** BORDERS - LEBANESE CUSTOMS  
**DIRECTION:** BEIRUT  
**SIZE:** 14.70X 4.30



**MEDIA TRADE**

**101 B**

**LOCATION:** BORDERS - LEBANESE CUSTOMS  
**DIRECTION:** DAMASCUS  
**SIZE:** 14.70X 4.30



**MEDIA TRADE**

**102 A**

**LOCATION:** DAMASCUS ENTRANCE  
**DIRECTION:** DAMASCUS  
**SIZE:** 14.70X 4.30





**MEDIA TRADE**

**102 B**

**LOCATION:** DAMASCUS ENTRANCE  
**DIRECTION:** BEIRUT  
**SIZE:** 14.70X 4.30



**MEDIA TRADE**

**103 A**

**LOCATION:** SYRIAN BORDERS BEFORE DUTY FREE  
**DIRECTION:** BEIRUT  
**SIZE:** 14.70X 4.30



**MEDIA TRADE**

**103 B**

**LOCATION:** SYRIAN BORDERS BEFORE DUTY FREE  
**DIRECTION:** DAMASCUS  
**SIZE:** 14.70X 4.30



# SOUTH





**MEDIA TRADE**

**1000 A**

**LOCATION:** SOUR - ABOU ASWAD  
**DIRECTION:** SOUR  
**SIZE:** 14.70 X 4.30



**MEDIA TRADE**

**1000 B**

**LOCATION:** SOUR - ABOU ASWAD  
**DIRECTION:** BEIRUT  
**SIZE:** 14.70 X 4.30





**MEDIA TRADE**

**1001 A**

**LOCATION: ZAHRANI**  
**DIRECTION: SOUR**  
**SIZE: 14.70 X 4.30**



**MEDIA TRADE**

**1001 B**

**LOCATION:** ZAHRANI  
**DIRECTION:** BEIRUT  
**SIZE:** 14.70 X 4.30



**MEDIA TRADE**

**1002 A**

**LOCATION: ZAHRANI**  
**DIRECTION: NABATIEH**  
**SIZE: 14.70 X 4.30**





**MEDIA TRADE**

**1002 B**

**LOCATION:** ZAHRANI  
**DIRECTION:** BEIRUT  
**SIZE:** 14.70 X 4.30



**MEDIA TRADE**

**1003 A**

**LOCATION: NABATIEH**  
**DIRECTION: NABATIEH**  
**SIZE: 14.70 X 4.30**



**MEDIA TRADE**

**1003 B**

**LOCATION:** NABATIEH  
**DIRECTION:** BEIRUT  
**SIZE:** 14.70 X 4.30





**MEDIA TRADE**

**1004 A**

**LOCATION:** JIEH NEAR ORCHID  
**DIRECTION:** BEIRUT  
**SIZE:** 14.70 X 4.30



**MEDIA TRADE**

**1004 B**

**LOCATION:** JIEH NEAR ORCHID  
**DIRECTION:** SAIDA  
**SIZE:** 14.70 X 4.30



**MEDIA TRADE**

**1005 A**

**LOCATION:** JIEH BEFORE RESORTS  
**DIRECTION:** BEIRUT  
**SIZE:** 14.70 X 4.30





**MEDIA TRADE**

**1005 B**

**LOCATION:** JIEH BEFORE RESORTS  
**DIRECTION:** SAIDA  
**SIZE:** 14.70 X 4.30



**MEDIA TRADE**

**1006 A**

**LOCATION:** SAADIYAT NEAR AYTAM STATION  
**DIRECTION:** SAIDA  
**SIZE:** 14.70 X 4.30



**MEDIA TRADE**

**1006 B**

**LOCATION:** SAADIYAT NEAR AYTAM STATION  
**DIRECTION:** BEIRUT  
**SIZE:** 14.70 X 4.30





**MEDIA TRADE**

**1007 A**

**LOCATION:** JIEH NEAR LA GUAVA  
**DIRECTION:** SAIDA  
**SIZE:** 14.70 X 4.30



**MEDIA TRADE**

**1007 B**

**LOCATION:** JIEH NEAR LA GUAVA  
**DIRECTION:** BEIRUT  
**SIZE:** 14.70 X 4.30



**MEDIA TRADE**

**1008 A**

**LOCATION:** JIEH NEAR BAMBOO BAY  
**DIRECTION:** SAIDA  
**SIZE:** 14.70 X 4.30





**MEDIA TRADE**

**1008 B**

**LOCATION:** JIEH NEAR BAMBOO BAY  
**DIRECTION:** BEIRUT  
**SIZE:** 14.70 X 4.30



**MEDIA TRADE**

**1009 A**

**LOCATION:** SAIDA EXIT  
**DIRECTION:** BEIRUT  
**SIZE:** 14.70 X 4.30



**MEDIA TRADE**

**1009 B**

**LOCATION:** SAIDA ENTRANCE  
**DIRECTION:** SAIDA  
**SIZE:** 14.70 X 4.30



**MEDIA TRADE**

**1010 A**

**LOCATION: JIEH**  
**DIRECTION: SAIDA**  
**SIZE: 14.70 X 8.30**





**MEDIA TRADE**

**1010 B**

**LOCATION: JIEH**  
**DIRECTION: BEIRUT**  
**SIZE: 14.70 X 8.30**



**MEDIA TRADE**

**1011 B**

**LOCATION:** SAIDA  
**DIRECTION:** JEZZINE  
**SIZE:** 8.00 X 8.00



**MEDIA TRADE**

**1011 B**

**LOCATION: JEZZINE**  
**DIRECTION: JEZZINE**  
**SIZE: 8.00 X 10.00**





**MEDIA TRADE**  
Your Regional Outdoor Media Solution ☎ 020 542



**MEDIA TRADE**

**1012 A**

**LOCATION:** ZEFTA - NABATIEH  
**DIRECTION:** SAIDA  
**SIZE:** 14.70 X 4.30





**MEDIA TRADE**

**1012 B**

**LOCATION:** ZEFTA - NABATIEH  
**DIRECTION:** NABATIEH  
**SIZE:** 14.70 X 4.30



**MEDIA TRADE**

**1013 A**

**LOCATION:** ZEFTA - NABATIEH  
**DIRECTION:** NABATIEH  
**SIZE:** 14.70 X 4.30



**MEDIA TRADE**

**1013 B**

**LOCATION:** ZEFTA - NABATIEH  
**DIRECTION:** SAIDA  
**SIZE:** 14.70 X 4.30





**MEDIA TRADE**

**1015 A**

**LOCATION: JIEH**  
**DIRECTION: BEIRUT**  
**SIZE: 14.70 X 8.30**





**MEDIA TRADE**

**1015 B**

**LOCATION: JIEH**  
**DIRECTION: SAIDA**  
**SIZE: 14.70 X 8.30**



**MEDIA TRADE**

**1016 A**

**LOCATION:** NAAMEH HIGHWAY  
**DIRECTION:** BEIRUT  
**SIZE:** 10.00 X 4.00



**MEDIA TRADE**

**1016 A2**

**LOCATION:** NAAMEH HIGHWAY  
**DIRECTION:** BEIRUT  
**SIZE:** 5.10 X 9.60



**MEDIA TRADE**

**1016 B**

**LOCATION:** NAAMEH HIGHWAY  
**DIRECTION:** BEIRUT  
**SIZE:** 6.50 X 10.40





**MEDIA TRADE**

**1017 A**

**LOCATION:** NAAMEH HIGHWAY  
**DIRECTION:** BEIRUT  
**SIZE:** 10.00 X 6.00



**MEDIA TRADE**

**1019 A**

**LOCATION:** KHALDE FACING KFC  
**DIRECTION:** BEIRUT  
**SIZE:** 14.70 X 4.30



**MEDIA TRADE**

**1019 B**

**LOCATION:** KHALDE HIGHWAY AFTER BRIDGE  
**DIRECTION:** SAIDA  
**SIZE:** 14.70 X 4.30



**MEDIA TRADE**

**1020 A**

**LOCATION:** KHALDE NEAR GALERY MATTA  
**DIRECTION:** SAIDA  
**SIZE:** 14.70 X 4.30





**MEDIA TRADE**

**1020 B**

**LOCATION:** KHALDE HIGHWAY  
**DIRECTION:** BEIRUT  
**SIZE:** 14.70 X 4.30



**MEDIA TRADE**

**1021 A**

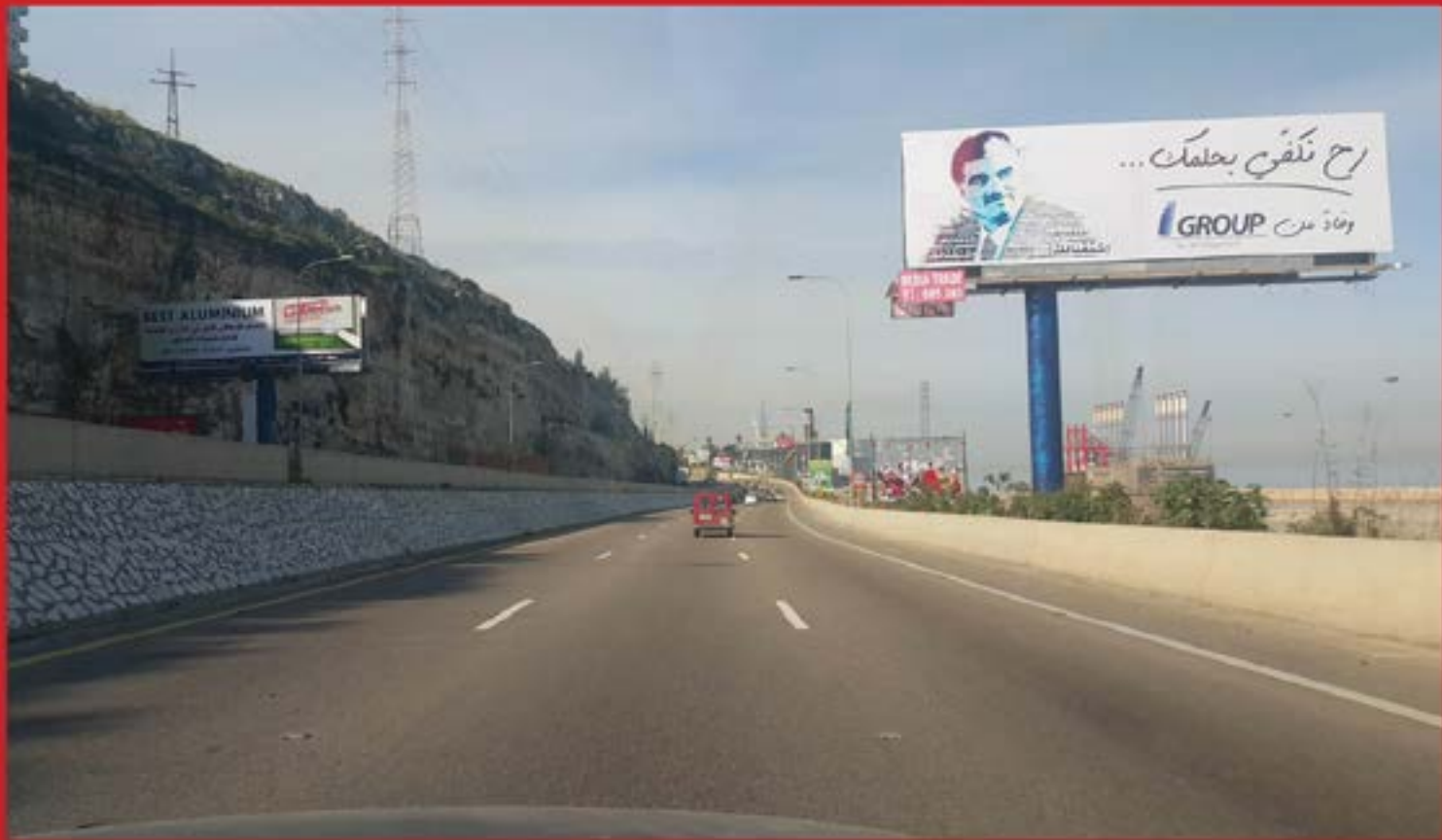
**LOCATION:** JIEH HIGHWAY FACING MOUSAWI  
**DIRECTION:** BEIRUT  
**SIZE:** 14.70 X 4.30



**MEDIA TRADE**

**1021 B**

**LOCATION:** JIEH HIGHWAY FACING MOUSAWI  
**DIRECTION:** SAIDA  
**SIZE:** 14.70 X 4.30



روح نلقى بحلمك ...  
 GROUP

BEST ALUMINIUM



**MEDIA TRADE**

**1022 A**

**LOCATION:** JIEH HIGHWAY FACING EDL  
**DIRECTION:** SAIDA  
**SIZE:** 14.70 X 4.30





**MEDIA TRADE**

**1022 B**

**LOCATION:** JIEH HIGHWAY FACING EDL  
**DIRECTION:** BEIRUT  
**SIZE:** 14.70 X 4.30



**MEDIA TRADE**

**1023 A**

**LOCATION:** JADRA HIGHWAY FACING MOUSAWA  
**DIRECTION:** SAIDA  
**SIZE:** 14.70 X 4.30



**MEDIA TRADE**

**1023 B**

**LOCATION:** JADRA HIGHWAY FACING MOUSAWE  
**DIRECTION:** BEIRUT  
**SIZE:** 14.70 X 4.30



**MEDIA TRADE**

**1024 A**

**LOCATION: SOUR DOWNTOWN**  
**DIRECTION: SOUR**  
**SIZE: 14.70 X 4.30**





**MEDIA TRADE**

**1024 B**

**LOCATION:** SOUR DOWNTOWN  
**DIRECTION:** BEIRUT  
**SIZE:** 14.70 X 4.30



**MEDIA TRADE**

**1025 A**

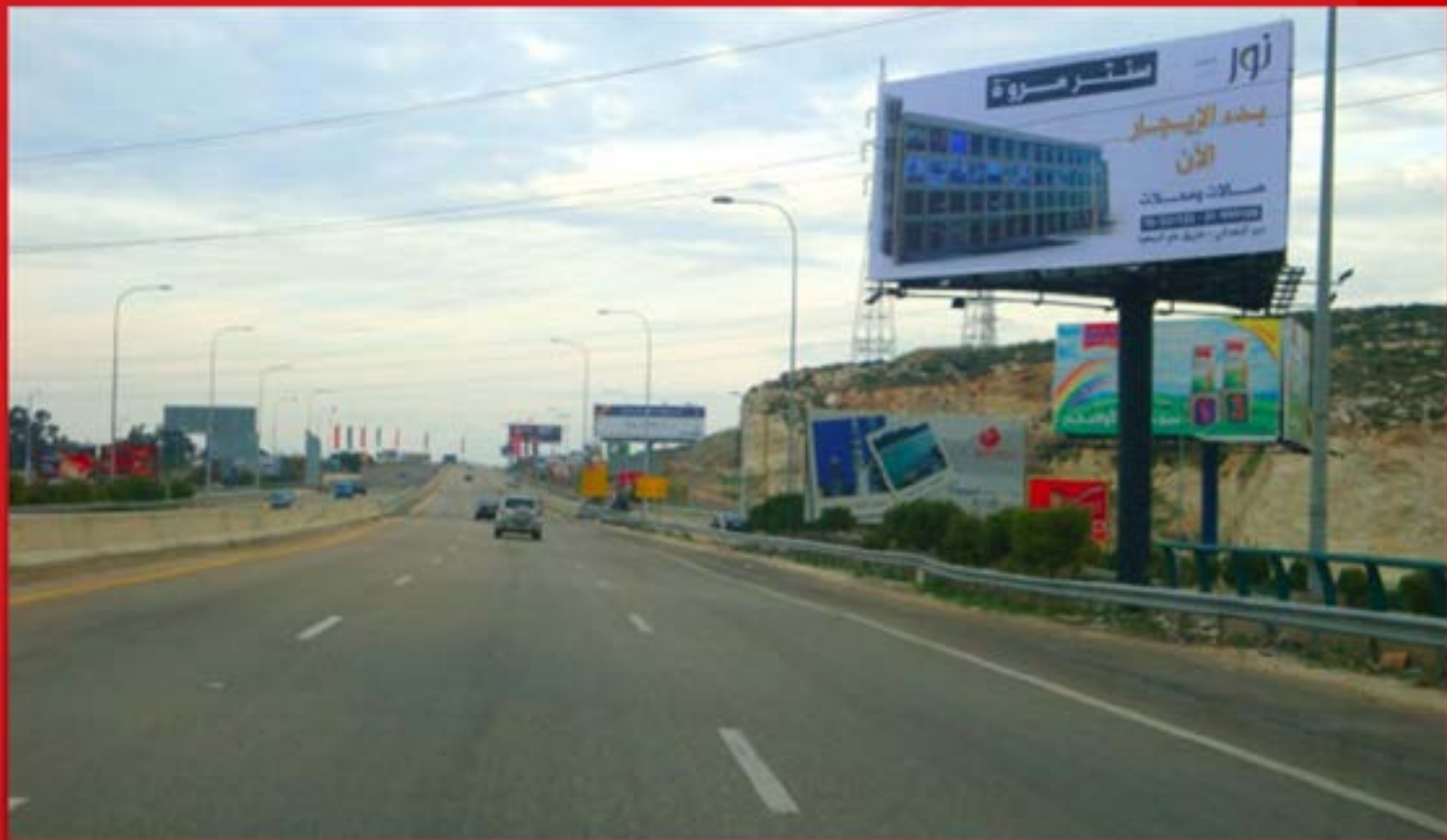
**LOCATION:** JIEH HIGHWAY  
**DIRECTION:** BEIRUT  
**SIZE:** 14.70 X 4.30



**MEDIA TRADE**

**1025 B**

**LOCATION:** JIEH HIGHWAY  
**DIRECTION:** SAIDA  
**SIZE:** 14.70 X 4.30



**MEDIA TRADE**

**1026 A**

**LOCATION:** ZHRANI  
**DIRECTION:** BEIRUT  
**SIZE:** 13.00X 6.00





**MEDIA TRADE**

**1026 B**

**LOCATION: ZAHRANI**  
**DIRECTION: SOUR**  
**SIZE: 13.00X 6.00**



**MEDIA TRADE**

**1026 C**

**LOCATION: ZAHRANI**  
**DIRECTION: SAIDA**  
**SIZE: 13.00X 6.00**



**MEDIA TRADE**

**1027 A**

**LOCATION:** ZAHRANI  
**DIRECTION:** SOUR  
**SIZE:** 14.70 X 4.30



**MEDIA TRADE**

**1027 B**

**LOCATION:** ZHRANI  
**DIRECTION:** BEIRUT  
**SIZE:** 14.70 X 4.30





**MEDIA TRADE**

**1028 A**

**LOCATION:** ABOU AL ASWAD HIGHWAY  
**DIRECTION:** BEIRUT  
**SIZE:** 14.70 X 4.30



**MEDIA TRADE**

**1028 B**

**LOCATION:** ABOU AL ASWAD HIGHWAY  
**DIRECTION:** SOUR  
**SIZE:** 14.70 X 4.30



**MEDIA TRADE**

**1029 A**

**LOCATION:** JIEH HIGHWAY  
**DIRECTION:** BEIRUT  
**SIZE:** 8.00 X 4.00



**MEDIA TRADE**

**1029 B**

**LOCATION:** JIEH HIGHWAY  
**DIRECTION:** SAIDA  
**SIZE:** 8.00 X 4.00





**MEDIA TRADE**

**1030 A**

**LOCATION:** SOUR - ABOU AL ASWAD 3  
**DIRECTION:** SOUTH  
**SIZE:** 14.70 X 4.30



**MEDIA TRADE**

**1030 B**

**LOCATION:** SOUR - ABOU AL ASWAD 3

**DIRECTION:** SAIDA

**SIZE:** 14.70 X 4.30



**MEDIA TRADE**

**1031 A**

**LOCATION:** SOUR - ABOU AL ASWAD 4  
**DIRECTION:** SOUTH  
**SIZE:** 14.70 X 4.30



**MEDIA TRADE**

**1031 B**

**LOCATION:** SOUR - ABOU AL ASWAD 4  
**DIRECTION:** SAIDA  
**SIZE:** 14.70 X 4.30





**MEDIA TRADE**

**1032 A**

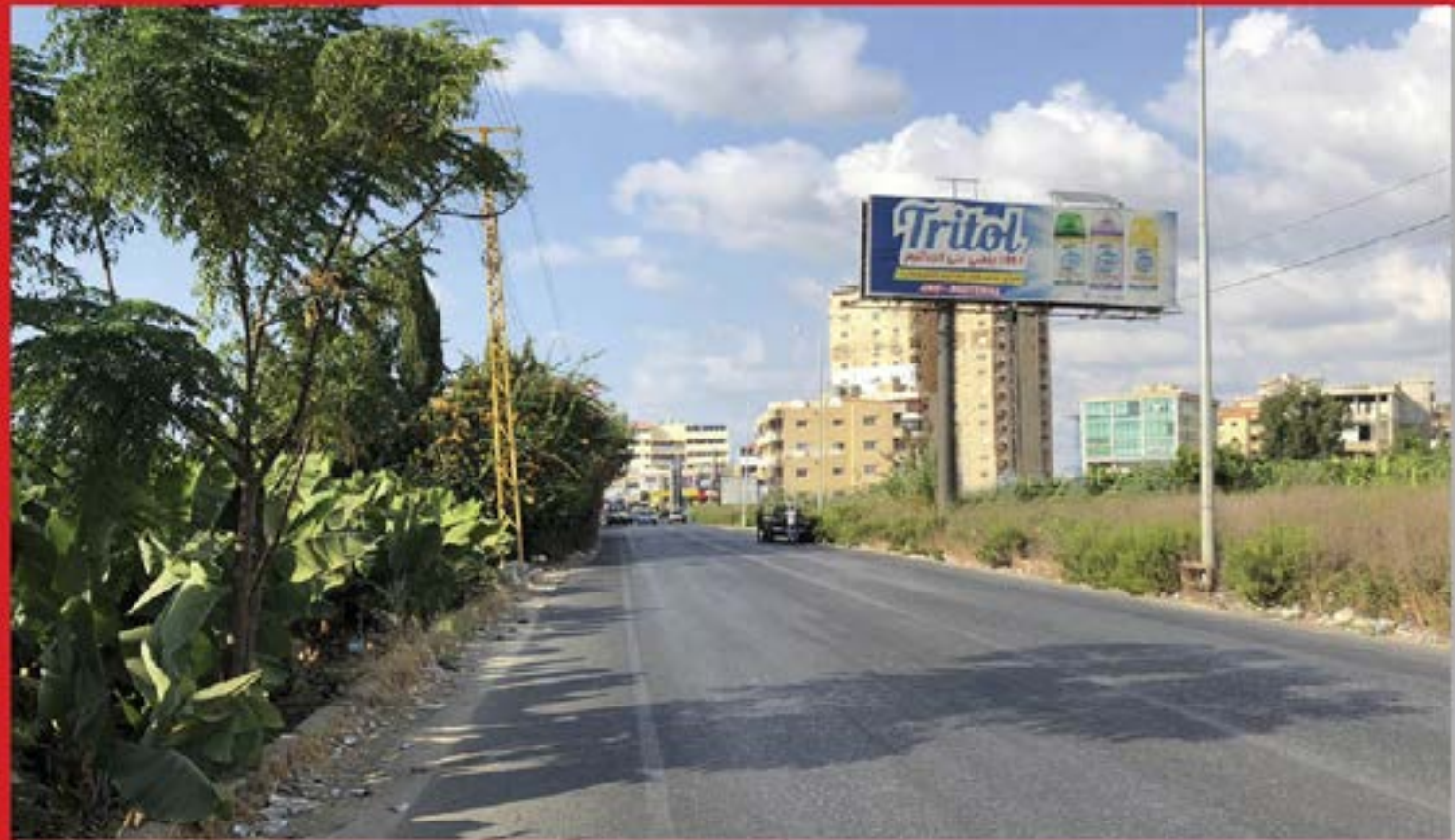
**LOCATION:** SOUR ENTRANCE BFR AITAM STATION  
**DIRECTION:** SOUR  
**SIZE:** 14.70 X 4.30



**MEDIA TRADE**

**1032 B**

**LOCATION:** SOUR ENTRANCE BFR AITAM STATION  
**DIRECTION:** SAIDA  
**SIZE:** 14.70 X 4.30



**MEDIA TRADE**

**1033 A**

**LOCATION:** SOUR - NAKOURA  
**DIRECTION:** SAIDA  
**SIZE:** 14.70 X 4.30





**MEDIA TRADE**

**1033 B**

**LOCATION:** SOUR - QANA  
**DIRECTION:** NAKOURA  
**SIZE:** 14.70 X 4.30



# MEDIA TRADE

First Regional Outdoor Media In Lebanon 71/01/695 383

MEDIA TRADE  
91/695 383



MEDIA TRADE

1034 A

**LOCATION:** SOUR ENTRANCE - AL HOSH - QUANA  
**DIRECTION:** SOUTH  
**SIZE:** 14.70 X 4.30



**MEDIA TRADE**

First Regional Outdoor Media In Lebanon 91/695 383



**MEDIA TRADE**

**1034 B**

**LOCATION:** SOUR EXIT - AL HOSH - QUANA  
**DIRECTION:** SOUTH  
**SIZE:** 14.70 X 4.30



**MEDIA TRADE**

**1035**

**LOCATION:** KHALDEH  
**DIRECTION:** BEIRUT  
**SIZE:** 30.00 X 2.50





**MEDIA TRADE**

**1036**

**LOCATION:** KHALDEH  
**DIRECTION:** SOUTH  
**SIZE:** 30.00 X 2.50





**MEDIA TRADE**

**1037**

**LOCATION:** DOHAT EL HOSS  
**DIRECTION:** BEIRUT  
**SIZE:** 30.00 X 3.00



**MEDIA TRADE**

**1038**

**LOCATION:** DOHAT EL HOSS  
**DIRECTION:** SOUTH  
**SIZE:** 30.00 X 3.00



**MEDIA TRADE**

**1039**

**LOCATION:** KHALDE INTERSECTION  
**DIRECTION:** BEIRUT  
**SIZE:** 30.00 X 2.50



**MEDIA TRADE**

**1040**

**LOCATION:** KHALDE INTERSECTION  
**DIRECTION:** SOUTH  
**SIZE:** 30.00 X 2.50



# NORTH





**MEDIA TRADE**

**902 A**

**LOCATION:** BATROUN EXIT  
**DIRECTION:** BEIRUT  
**SIZE:** 14.70 X 4.30



**MEDIA TRADE**

**902 B**

**LOCATION:** BATROUN ENTRANCE  
**DIRECTION:** BATROUN DT  
**SIZE:** 14.70 X 4.30



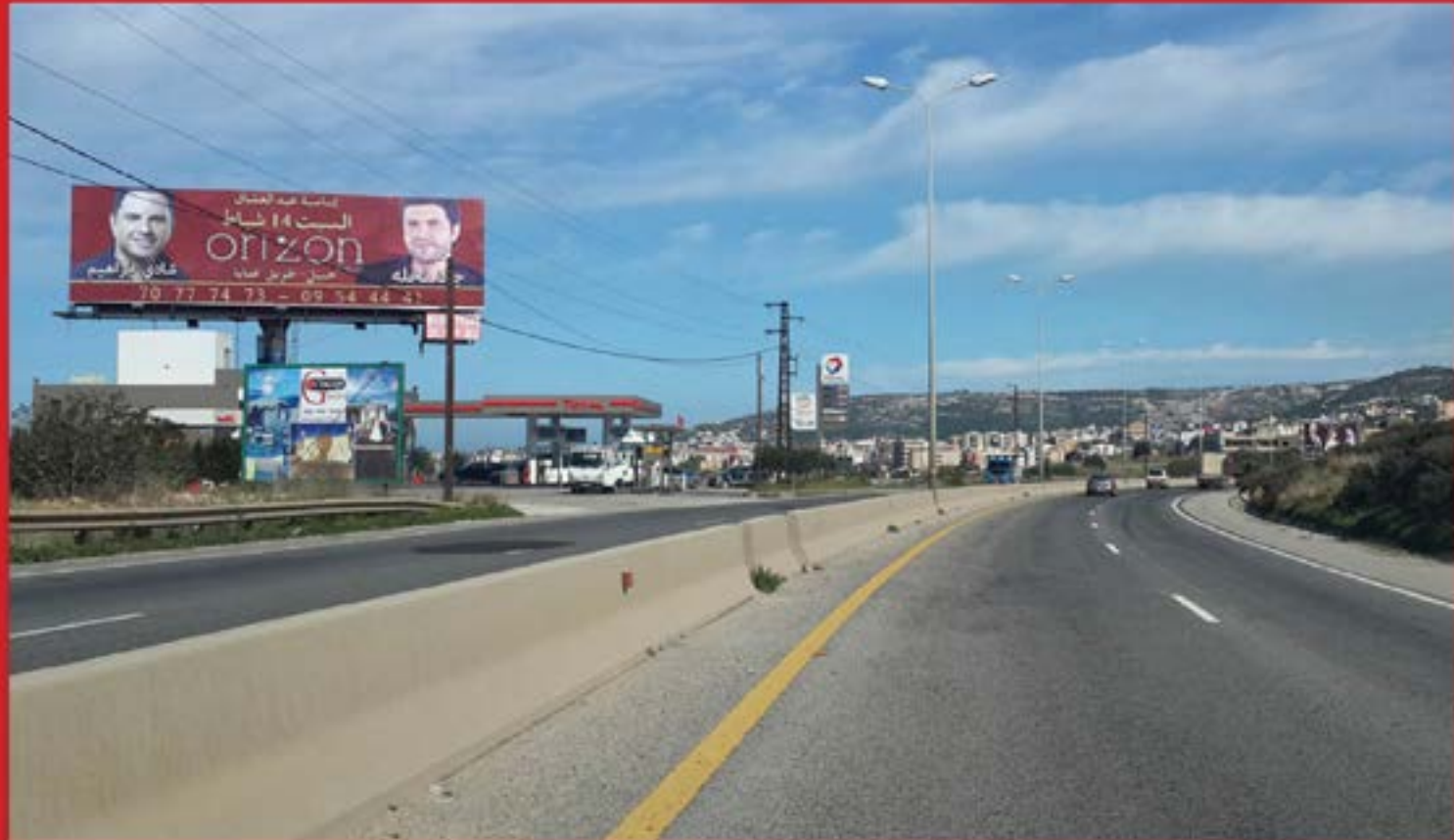


**MEDIA TRADE**

**903 A**

**LOCATION:** BATROUN HIGHWAY  
**DIRECTION:** BEIRUT  
**SIZE:** 14.70 X 4.30





**MEDIA TRADE**

**903 B**

**LOCATION:** BATROUN HIGHWAY  
**DIRECTION:** TRIPOLY  
**SIZE:** 14.70 X 4.30



**MEDIA TRADE**

**904 A**

**LOCATION:** FIDAR HIGHWAY BEFORE EDDE  
**DIRECTION:** BEIRUT  
**SIZE:** 14.70 X 4.30



**MEDIA TRADE**

**904 B**

**LOCATION:** FIDAR HIGHWAY BEFORE EDDE  
**DIRECTION:** TRIPOLY  
**SIZE:** 14.70 X 4.30





**MEDIA TRADE**

**905 A**

**LOCATION:** CHEKKA HIGHWAY AFTER TUNNEL  
**DIRECTION:** TRIPOLY  
**SIZE:** 14.70 X 4.30





**MEDIA TRADE**

**905 B**

**LOCATION:** CHEKKA HIGHWAY BEFORE TUNNEL  
**DIRECTION:** BEIRUT  
**SIZE:** 14.70 X 4.30



**MEDIA TRADE**

**906 A**

**LOCATION:** HALAT HIGHWAY AFTER SANITA  
**DIRECTION:** BEIRUT  
**SIZE:** 14.70 X 4.30



**MEDIA TRADE**

**906 B**

**LOCATION:** HALAT HIGHWAY BEFORE SANITA  
**DIRECTION:** TRIPOLY  
**SIZE:** 14.70 X 4.30





**MEDIA TRADE**

**907 A**

**LOCATION:** CHEKKA HIGHWAY BEFOR TUNNEL  
**DIRECTION:** BEIRUT  
**SIZE:** 14.70 X 4.30





**MEDIA TRADE**

**907 B**

**LOCATION:** CHEKKA HIGHWAY AFTER TUNNEL  
**DIRECTION:** TRIPOLY  
**SIZE:** 14.70 X 4.30



**MEDIA TRADE**

**908 A**

**LOCATION:** TABARJA HIGHWAY  
**DIRECTION:** TRIPOLY  
**SIZE:** 14.70 X 4.30



**MEDIA TRADE**

**908 B**

**LOCATION:** TABARJA HIGHWAY  
**DIRECTION:** BEIRUT  
**SIZE:** 14.70 X 4.30





**MEDIA TRADE**

**909 A**

**LOCATION:** CHEKKA HIGHWAY  
**DIRECTION:** BEIRUT  
**SIZE:** 14.70 X 4.30





**MEDIA TRADE**

**909 B**

**LOCATION:** CHEKKA HIGHWAY  
**DIRECTION:** TRIPOLY  
**SIZE:** 14.70 X 4.30



**MEDIA TRADE**

**911 A**

**LOCATION:** BALAMAND HILLS  
**DIRECTION:** BEIRUT  
**SIZE:** 14.70 X 4.30



**MEDIA TRADE**

**911 B**

**LOCATION:** BALAMAND HILLS  
**DIRECTION:** TRIPOLY  
**SIZE:** 14.70 X 4.30



**MEDIA TRADE**

**912 A**

**LOCATION:** BALAMAND  
**DIRECTION:** TRIPOLY  
**SIZE:** 14.70 X 4.30





**MEDIA TRADE**

**912 B**

**LOCATION:** BALAMAND  
**DIRECTION:** BEIRUT  
**SIZE:** 14.70 X 4.30



**MEDIA TRADE**

**913 A**

**LOCATION:** MADFOUN HIGHWAY  
**DIRECTION:** BEIRUT  
**SIZE:** 14.70 X 4.30



**MEDIA TRADE**

**913 B**

**LOCATION:** MADFOUN HIGHWAY  
**DIRECTION:** TRIPOLY  
**SIZE:** 14.70 X 4.30



**MEDIA TRADE**

**914 A**

**LOCATION:** BARBARA HIGHWAY  
**DIRECTION:** BEIRUT  
**SIZE:** 14.70 X 4.30





**MEDIA TRADE**

**914 B**

**LOCATION:** BARBARA HIGHWAY  
**DIRECTION:** TRIPOLY  
**SIZE:** 14.70 X 4.30



**MEDIA TRADE**

**916 A**

**LOCATION:** BARBARA HIGHWAY  
**DIRECTION:** TRIPOLY  
**SIZE:** 14.70 X 4.30



**MEDIA TRADE**

**916 B**

**LOCATION:** BARBARA HIGHWAY  
**DIRECTION:** BEIRUT  
**SIZE:** 14.70 X 4.30



**MEDIA TRADE**

**917 A**

**LOCATION:** JBEIL HIGHWAY FACING EDDE SANDS  
**DIRECTION:** TRIPOLY  
**SIZE:** 14.70 X 4.30





**MEDIA TRADE**

**917 B**

**LOCATION:** JBEIL HIGHWAY FACING EDDE SANDS  
**DIRECTION:** BEIRUT  
**SIZE:** 14.70 X 4.30



**MEDIA TRADE**

**918 A**

**LOCATION:** TRIPOLY - ANFE  
**DIRECTION:** TRIPOLY  
**SIZE:** 14.70 X 4.30

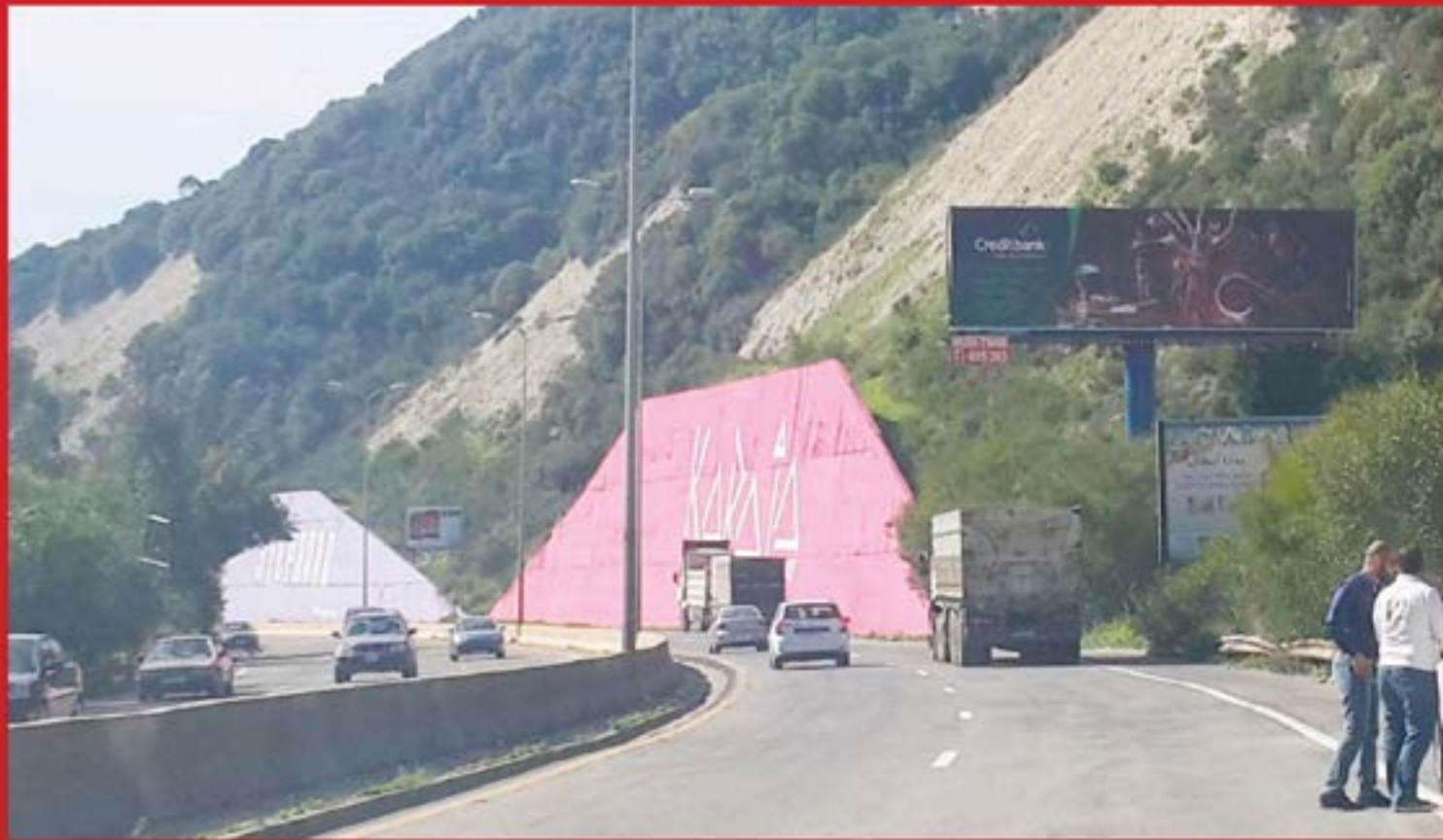


**MEDIA TRADE**

**918 B**

**LOCATION:** TRIPOLY - ANFE  
**DIRECTION:** BEIRUT  
**SIZE:** 14.70 X 4.30



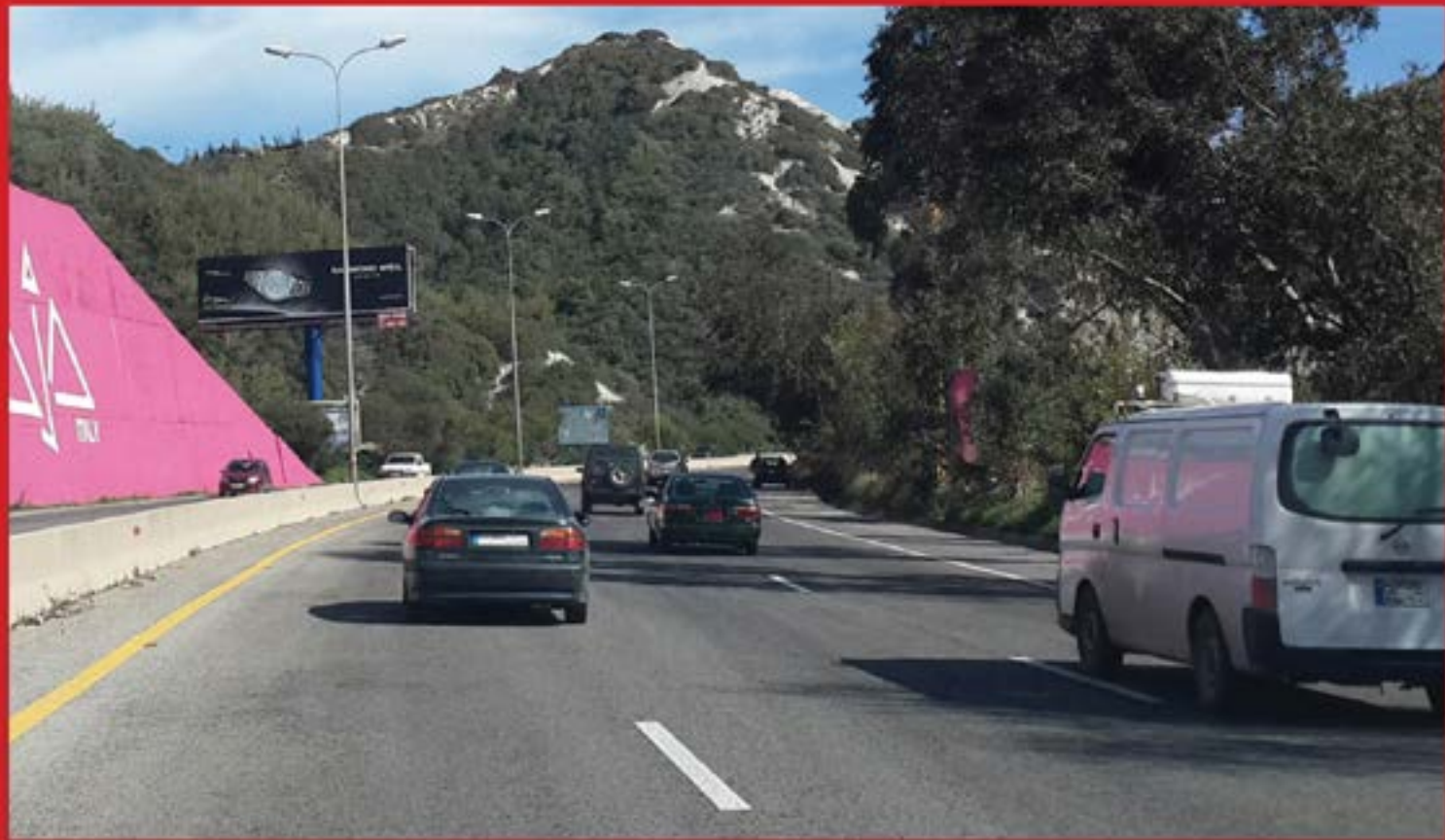


**MEDIA TRADE**

**919 A**

**LOCATION:** CHEKKA AFTER TUNNEL  
**DIRECTION:** BEIRUT  
**SIZE:** 14.70 X 4.30





**MEDIA TRADE**

**919 B**

**LOCATION:** CHEKKA BEFORE TUNNEL  
**DIRECTION:** TRIPOLY  
**SIZE:** 14.70 X 4.30



**MEDIA TRADE**

**920 A**

**LOCATION:** RIHANIEH  
**DIRECTION:** BEIRUT  
**SIZE:** 14.70 X 4.30



**MEDIA TRADE**

**920 B**

**LOCATION:** RIHANIEH  
**DIRECTION:** TRIPOLY  
**SIZE:** 14.70 X 4.30



**MEDIA TRADE**

**921 A**

**LOCATION:** BARBARA HIGHWAY  
**DIRECTION:** BEIRUT  
**SIZE:** 14.70 X 4.30





**Media Trade**



**MEDIA TRADE**

**921 B**

**LOCATION:** BARBARA HIGHWAY  
**DIRECTION:** TRIPOLY  
**SIZE:** 14.70 X 4.30



**MEDIA TRADE**

**922 A**

**LOCATION:** KFARHAZIR - KOURA HIGHWAY  
**DIRECTION:** BEIRUT  
**SIZE:** 14.70 X 4.30



**MEDIA TRADE**

**922 B**

**LOCATION:** KFARHAZIR - KOURA HIGHWAY  
**DIRECTION:** TRIPOLY  
**SIZE:** 14.70 X 4.30



**MEDIA TRADE**

**923 A**

**LOCATION:** TRIPOLY - KALAMOUN  
**DIRECTION:** TRIPOLY  
**SIZE:** 14.70 X 4.30





**MEDIA TRADE**

**923 B**

**LOCATION:** TRIPOLY - KALAMOUN  
**DIRECTION:** BEIRUT  
**SIZE:** 14.70 X 4.30



**MEDIA TRADE**

**924 A**

**LOCATION:** TRIPOLY - RAS MASKA  
**DIRECTION:** TRIPOLY  
**SIZE:** 14.70 X 4.30



**MEDIA TRADE**

OUTDOOR MEDIA & DIGITAL PRINTING

MEDIA TRADE  
TEL: 800 363



**MEDIA TRADE**

**924 B**

**LOCATION:** TRIPOLY - RAS MASKA  
**DIRECTION:** BEIRUT  
**SIZE:** 14.70 X 4.30



**MEDIA TRADE**

**927 A**

**LOCATION:** ZGHARTA DOWN TOWN  
**DIRECTION:** AMIOUN  
**SIZE:** 8.00 X 8.00





**MEDIA TRADE**

**927 B**

**LOCATION:** ZGHARTA DOWN TOWN  
**DIRECTION:** TRIPOLY  
**SIZE:** 8.00 X 8.00



**MEDIA TRADE**

**928 A**

**LOCATION:** KFARHATA  
**DIRECTION:** ZGHARTA  
**SIZE:** 8.00 X 8.00



MOURA TRADING  
011 495 283



**MEDIA TRADE**

**928 B**

**LOCATION:** K FARHATA  
**DIRECTION:** EHDEN  
**SIZE:** 8.00 X 8.00





**MEDIA TRADE**

**929 A**

**LOCATION:** HALAT  
**DIRECTION:** BEIRUT  
**SIZE:** 14.70 X 4.30





**MEDIA TRADE**

**929 B**

**LOCATION:** HALAT  
**DIRECTION:** TRIPOLY  
**SIZE:** 14.70 X 4.30



**MEDIA TRADE**

**931 A**

**LOCATION:** CHEKKA HIGHWAY  
**DIRECTION:** TRIPOLY  
**SIZE:** 14.70 X 4.30



**MEDIA TRADE**

**931 B**

**LOCATION:** CHEKKA HIGHWAY  
**DIRECTION:** BEIRUT  
**SIZE:** 14.70 X 4.30



**MEDIA TRADE**

**1201**

**LOCATION:** JOUNIEH HIGHWAY  
**DIRECTION:** TRIPOLY  
**SIZE:** 32.00 X 2.00





**MEDIA TRADE**

**1202**

**LOCATION:** JOUNIEH HIGHWAY  
**DIRECTION:** BEIRUT  
**SIZE:** 32.00 X 2.00



**MEDIA TRADE**

**1203**

**LOCATION:** BATROUN HIGHWAY ( ENTRANCE )  
**DIRECTION:** BEIRUT  
**SIZE:** 27.00 X 2.00



**MEDIA TRADE**

**1204**

**LOCATION:** BATROUN HIGHWAY ( ENTRANCE )  
**DIRECTION:** TRIPOLY  
**SIZE:** 27.00 X 2.00





**MEDIA TRADE**

**1207**

**LOCATION:** GHAZIR NEAR CASINO DU LIBAN  
**DIRECTION:** TRIPOLI  
**SIZE:** 25.00 X 1.75





**MEDIA TRADE**

**1208**

**LOCATION:** GHAZIR NEAR CASINO DU LIBAN  
**DIRECTION:** BEIRUT  
**SIZE:** 25.00 X 1.75



**MEDIA TRADE**

**1220**

**LOCATION:** DEIR EMAAR  
**DIRECTION:** TRIPOLY  
**SIZE:** 21.50 X 2.50



**MEDIA TRADE**

**1221**

**LOCATION:** DEIR EMAAR  
**DIRECTION:** AKKAR  
**SIZE:** 12.65X 2.50





**MEDIA TRADE**

**1222**

**LOCATION:** MENIEH HIGHWAY

**DIRECTION:** TRIPOLY

**SIZE:** 19.50 X 1.70

**PRICE:** 2000 \$





**MEDIA TRADE**

**1223**

**LOCATION:** MENIEH HIGHWAY

**DIRECTION:** AKKAR

**SIZE:** 19.50 X 1.70

**PRICE:** 2000 \$



**MEDIA TRADE MEDIA TRADE**



**MEDIA TRADE**

**1224**

**LOCATION:** DEIR EMMAR  
**DIRECTION:** TRIPOLI  
**SIZE:** 15.20 X 2.50



**MEDIA TRADE**

**1225**

**LOCATION:** DEIR EMMAR  
**DIRECTION:** AKKAR  
**SIZE:** 15.20 X 2.50



**MEDIA TRADE**

**BH 10A**

**LOCATION:** CHEKKA  
**DIRECTION:** CHEKKA - AMIOUN  
**SIZE:** 8.00 X 3.00





**MEDIA TRADE**

**BH 11A**

**LOCATION:** AL RIHAN  
**DIRECTION:** TRIPOLI  
**SIZE:** 10.00 X 4.00



**MEDIA TRADE**

**BH 12A**

**LOCATION:** AL RIHAN  
**DIRECTION:** BEIRUT  
**SIZE:** 8.00 X 3.00



**MEDIA TRADE**

**BH 13A**

**LOCATION:** MEJDLAYA  
**DIRECTION:** TRIPOLI - ZGHARTA  
**SIZE:** 8.00 X 3.00





**MEDIA TRADE**

**BH 14A**

**LOCATION:** TRIPOLI ENTRANCE  
**DIRECTION:** TRIPOLI  
**SIZE:** 8.00 X 3.00





**MEDIA TRADE**

**BH 15A**

**LOCATION:** MONSEF  
**DIRECTION:** TRIPOLI  
**SIZE:** 8.00 X 3.00



**MEDIA TRADE**



**MEDIA TRADE**

**BH 16A**

**LOCATION:** CHEKKA  
**DIRECTION:** TRIPOLI  
**SIZE:** 8.00 X 3.00



**MEDIA TRADE**

**BH 17A**

**LOCATION:** MONSEF  
**DIRECTION:** TRIPOLI  
**SIZE:** 14.70 X 4.30





**MEDIA TRADE**

**BH 17B**

**LOCATION:** MONSEF  
**DIRECTION:** BEIRUT  
**SIZE:** 14.70 X 4.30





**MEDIA TRADE**

**BH 18A**

**LOCATION:** CHEKKA  
**DIRECTION:** TRIPOLI  
**SIZE:** 14.70 X 4.30



**MEDIA TRADE**

**BH 18B**

**LOCATION: CHEKKA**  
**DIRECTION: BEIRUT**  
**SIZE: 14.70 X 4.30**



**MEDIA TRADE**

**BH 19**

**LOCATION:** CHEKKA  
**DIRECTION:** TRIPOLI  
**SIZE:** 22.00 X 2.00





**MEDIA TRADE**



**MEDIA TRADE**

**BH 1A**

**LOCATION:** TRIPOLI  
**DIRECTION:** WADI HAB  
**SIZE:** 8.00 X 3.00





**MEDIA TRADE**

**BH 1B**

**LOCATION:** TRIPOLI  
**DIRECTION:** WADI HAB  
**SIZE:** 8.00 X 3.00



**MEDIA TRADE**

**BH 2A**

**LOCATION:** MONSEF  
**DIRECTION:** TRIPOLI  
**SIZE:** 8.00 X 3.00



**MEDIA TRADE**

**BH 3A**

**LOCATION:** CHEKKA  
**DIRECTION:** AMIDUN - CHEKKA  
**SIZE:** 8.00 X 3.00





**MEDIA TRADE**

**BH 4A**

**LOCATION:** AMIOUN  
**DIRECTION:** KOURA HOSPITAL  
**SIZE:** 8.00 X 3.00





**MEDIA TRADE**

**BH 5B**

**LOCATION:** MEJDLAYA (ARMY CHEK POINT )  
**DIRECTION:** ZGHARTA - TRIPOLI  
**SIZE:** 8.00 X 3.00



**MEDIA TRADE**

**BH 5A**

**LOCATION:** MEJDLAYA (ARMY CHEK POINT )  
**DIRECTION:** TRIPOLI - ZGHARTA  
**SIZE:** 8.00 X 3.00



**MEDIA TRADE**

**BH 6A**

**LOCATION:** MEJDLAYA  
**DIRECTION:** ZGHARTA - TRIPOLI  
**SIZE:** 8.00 X 3.00





**MEDIA TRADE**

**BH 7A**

**LOCATION:** BALAMAND  
**DIRECTION:** UNIVERSITY OF BALAMAND  
**SIZE:** 8.00 X 3.00





**MEDIA TRADE**

**BH 8A**

**LOCATION:** RAS MASKA  
**DIRECTION:** TRIPOLI  
**SIZE:** 8.00 X 3.00



**MEDIA TRADE**

**BH 9A**

**LOCATION:** TRIPOLI  
**DIRECTION:** ROUNDABOUT ABOU SAMRA  
**SIZE:** 8.00 X 3.00